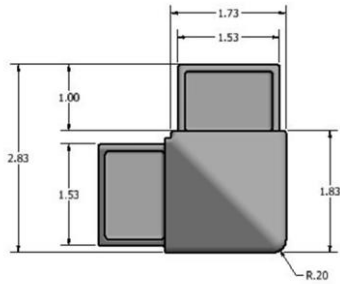


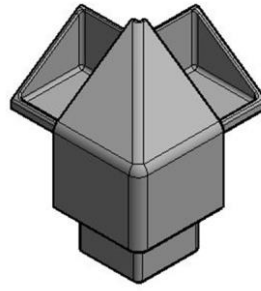
HEADRAIL

Headrail Support Corner Cap

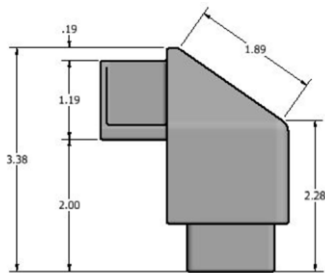
TOP VIEW



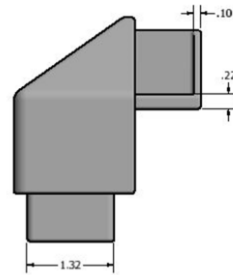
ISOMETRIC VIEW



FRONT VIEW



SIDE VIEW



NOTES:

Shown is the plastic headrail corner cap, made from injected molded high density polyethylene (HDPE) pigmented grey.

Corner caps can be used in left or right hand applications where there is a return headrail to the back wall.

NOTE: Job-Specific specifications for all orders are located on shop drawing layouts (Drawings are not to scale)



Patent Pending