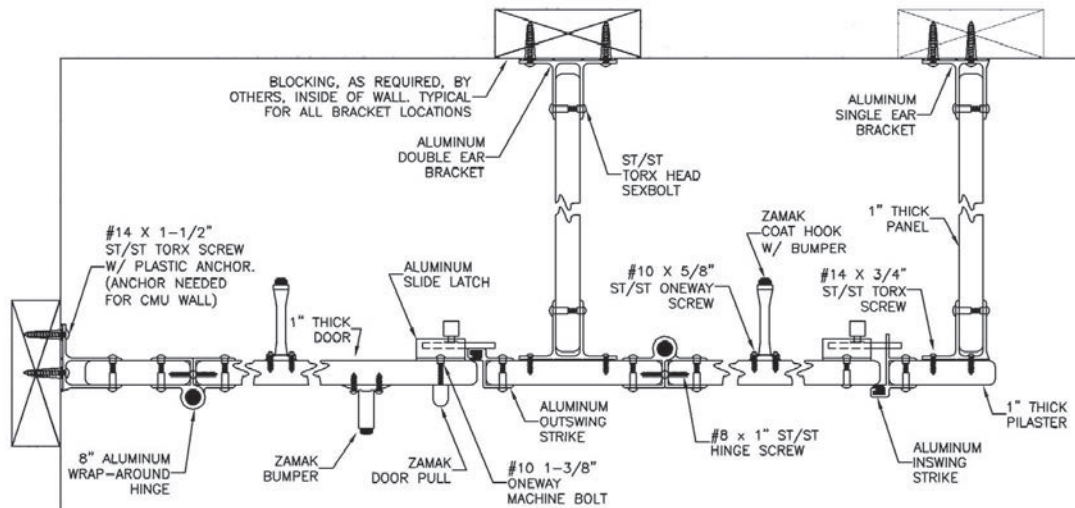




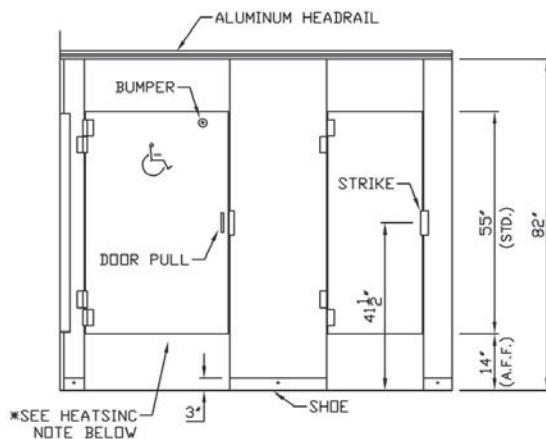
FLOOR-MOUNTED OVERHEAD-BRACED

8" Aluminum Wrap-Around Hinge Continuous Aluminum Brackets

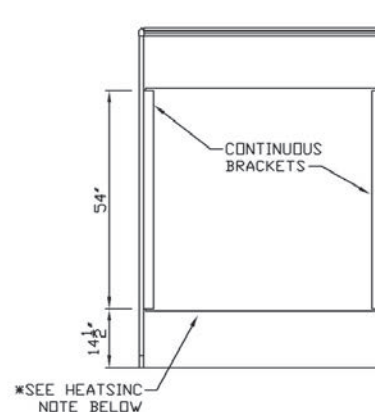
PLAN ELEVATION



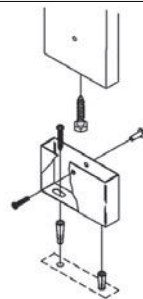
FRONT ELEVATION



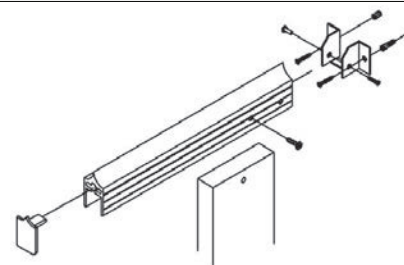
SIDE ELEVATION



FLOOR MOUNT



HEADRAIL BRACE



NOTE: Job-Specific Specifications for all orders are located on shop drawing layouts.

* HEATSINC: Heatsinc is to be placed on the bottom of the panels & doors. (If specified)

(Drawings are not to scale)

Drawing shown with 8" wrap-around hinge. Please see individual section for all hardware options.

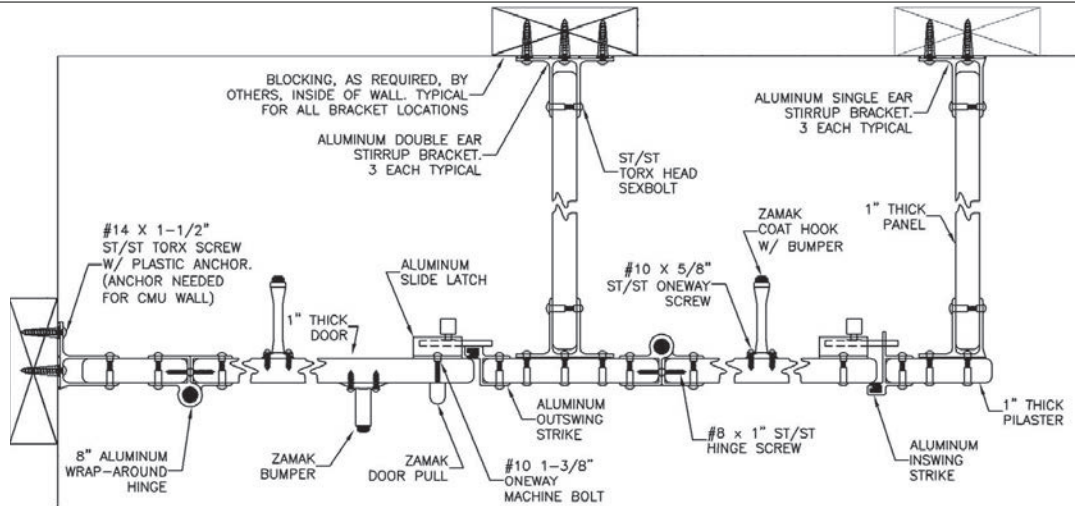
Drawings for all configuration options are available at www.scrantonproducts.com and on the memory stick attached to the binder.



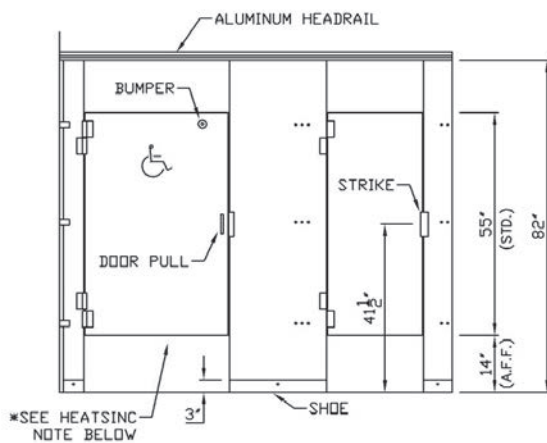
FLOOR-MOUNTED OVERHEAD-BRACED

8" Aluminum Wrap-Around Hinge Stirrup Brackets

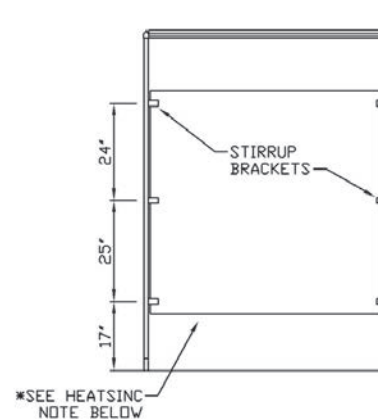
PLAN ELEVATION



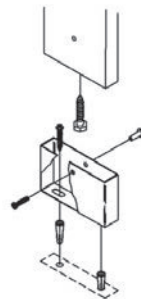
FRONT ELEVATION



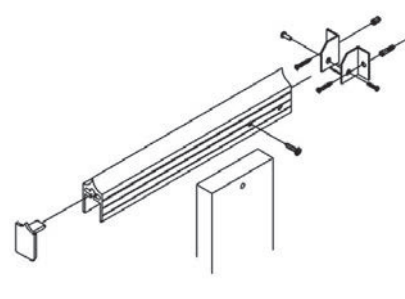
SIDE ELEVATION



FLOOR MOUNT



HEADRAIL BRACE



NOTE: Job-Specific Specifications for all orders are located on shop drawing layouts.

* HEATSINC: Heatsinc is to be placed on the bottom of the panels & doors. (If specified)

(Drawings are not to scale)

Drawing shown with 8" wrap-around hinge. Please see individual section for all hardware options.

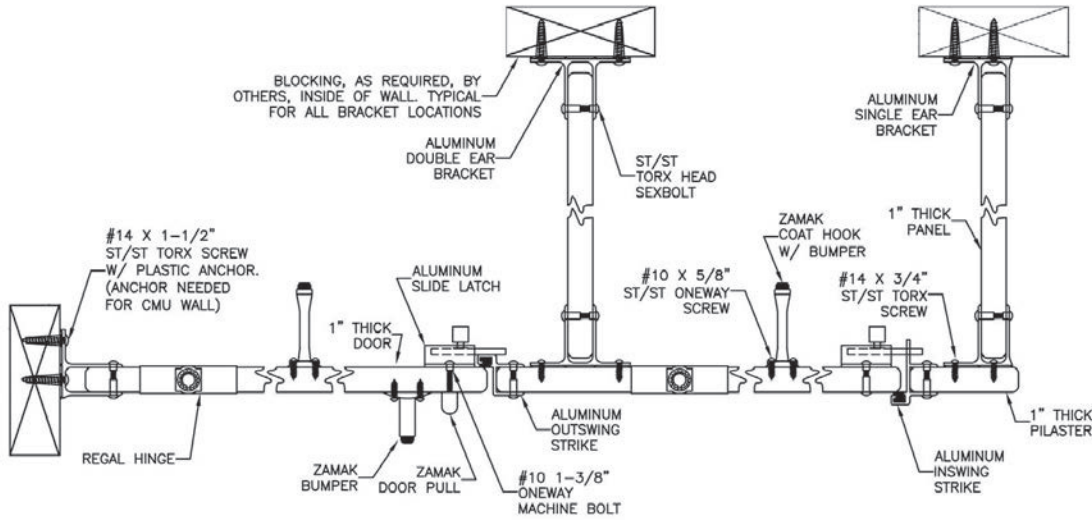
Drawings for all configuration options are available at www.scrantonproducts.com and on the memory stick attached to the binder.



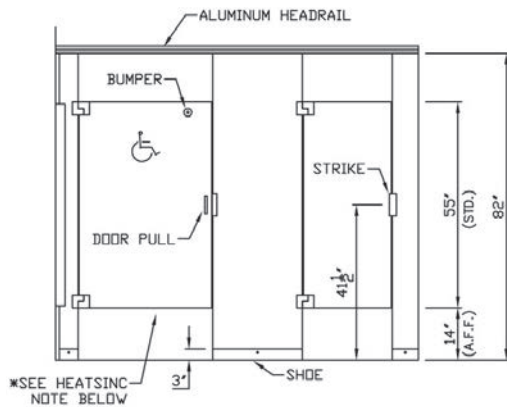
FLOOR-MOUNTED OVERHEAD-BRACED

Regal Hinge Continuous Aluminum Brackets

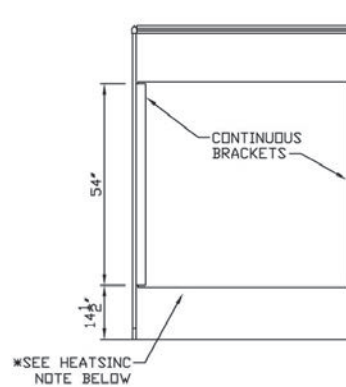
PLAN ELEVATION



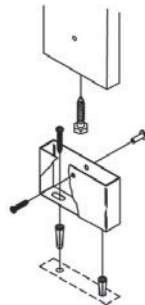
FRONT ELEVATION



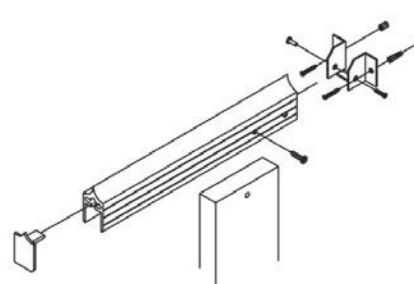
SIDE ELEVATION



FLOOR MOUNT



HEADRAIL BRACE



NOTE: Job-Specific Specifications for all orders are located on shop drawing layouts.

* HEATSINC: Heatsinc is to be placed on the bottom of the panels & doors. (If specified)

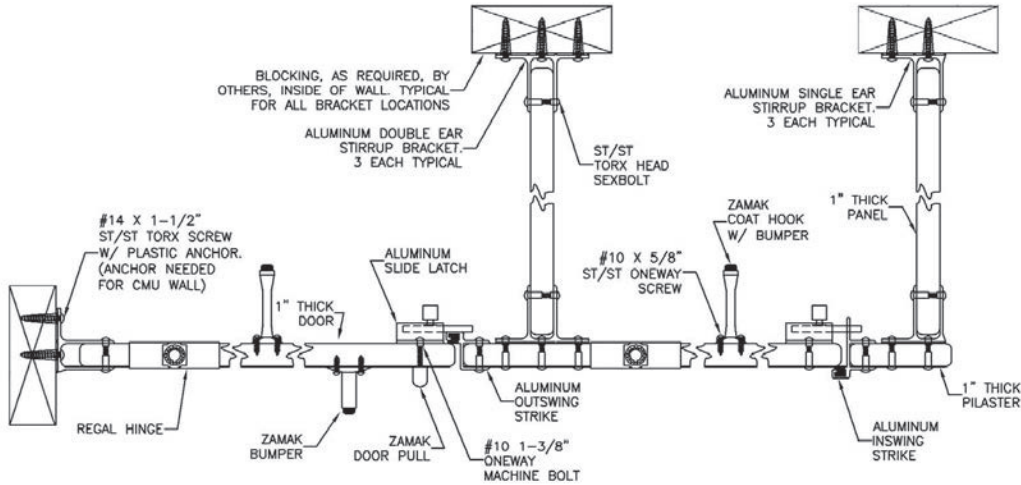
(Drawings are not to scale)

Drawings for all configuration options are available at www.scrantonproducts.com and on the memory stick attached to the binder.

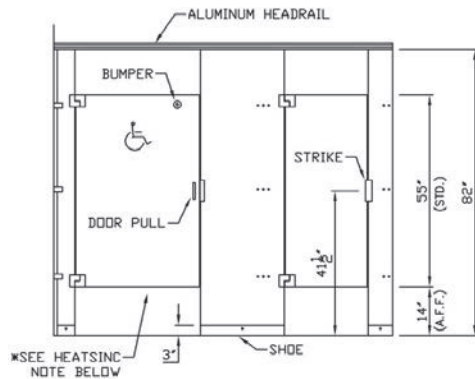
FLOOR-MOUNTED OVERHEAD-BRACED

Regal Hinge Stirrup Brackets

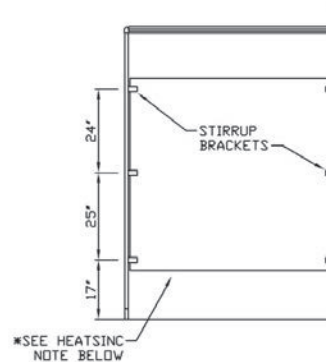
PLAN ELEVATION



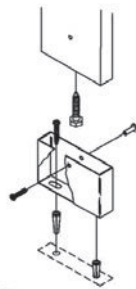
FRONT ELEVATION



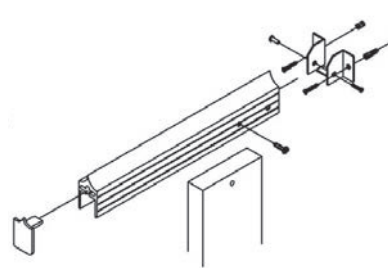
SIDE ELEVATION



FLOOR MOUNT



HEADRAIL BRACE



NOTE: Job-Specific Specifications for all orders are located on shop drawing layouts.

* HEATSINC: Heatsinc is to be placed on the bottom of the panels & doors. (If specified)

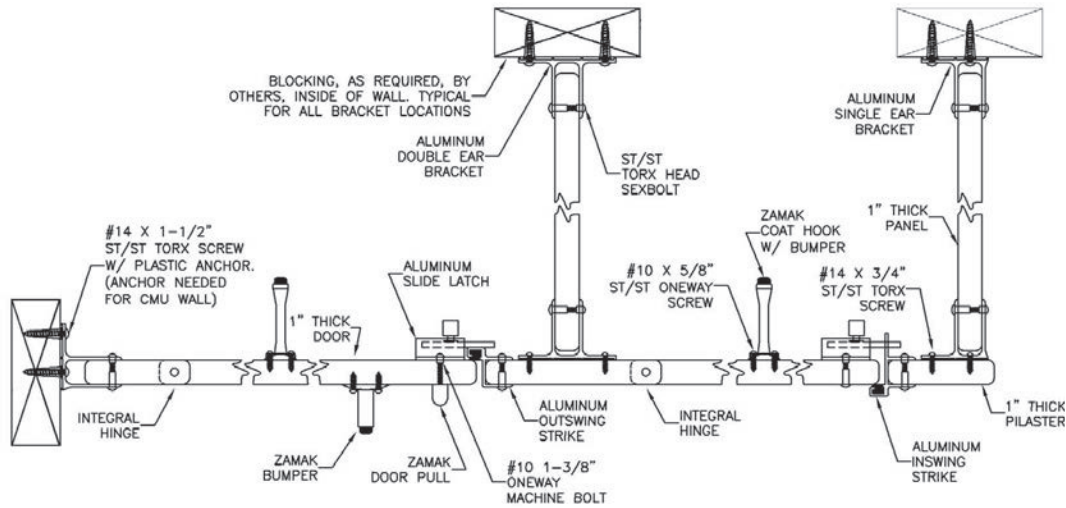
(Drawings are not to scale)

Drawings for all configuration options are available at www.scrantonproducts.com and on the memory stick attached to the binder.

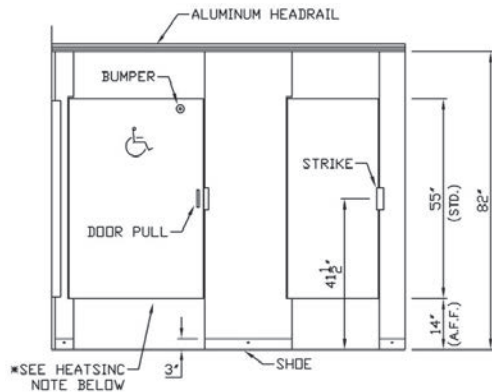
FLOOR-MOUNTED OVERHEAD-BRACED

Stealth Integral Hinge Continuous Aluminum Brackets

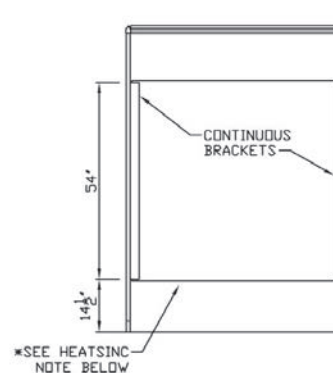
PLAN ELEVATION



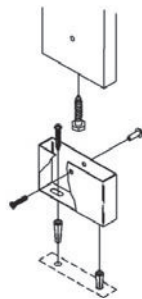
FRONT ELEVATION



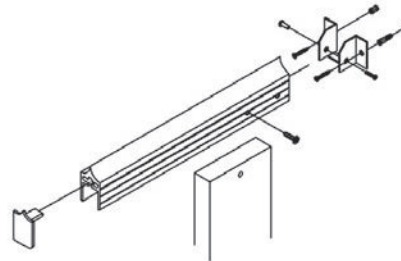
SIDE ELEVATION



FLOOR MOUNT



HEADRAIL BRACE



NOTE: Job-Specific Specifications for all orders are located on shop drawing layouts.

* HEATSINC: Heatsinc is to be placed on the bottom of the panels & doors. (If specified)

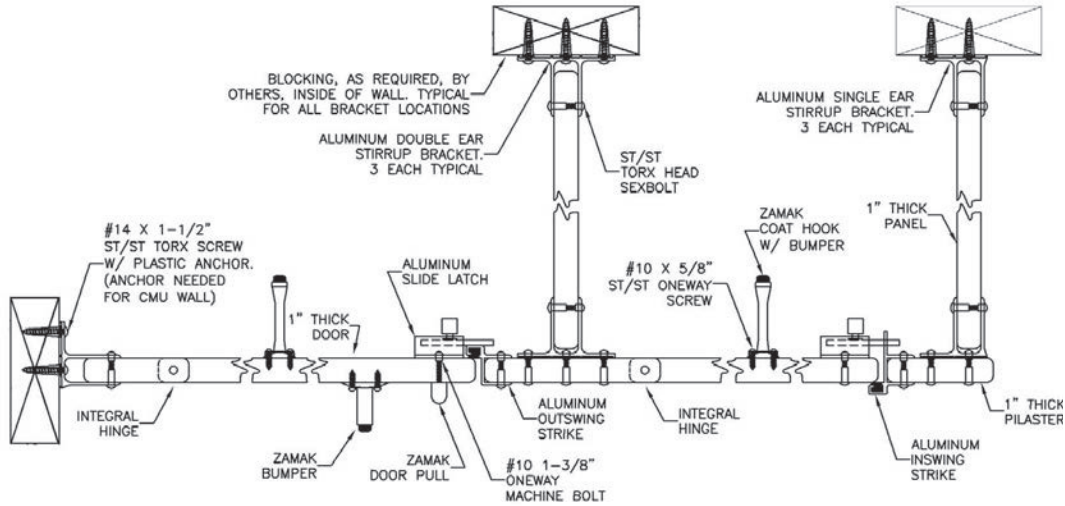
(Drawings are not to scale)

Drawings for all configuration options are available at www.scrantonproducts.com and on the memory stick attached to the binder.

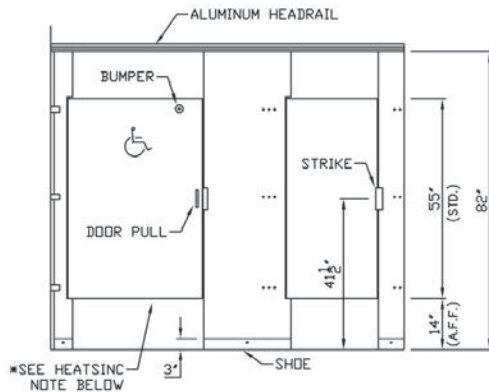
FLOOR-MOUNTED OVERHEAD-BRACED

Stealth Integral Hinge Stirrup Brackets

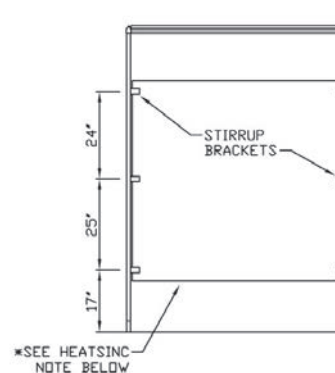
PLAN ELEVATION



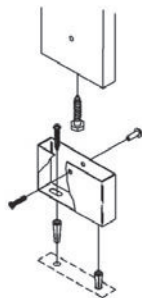
FRONT ELEVATION



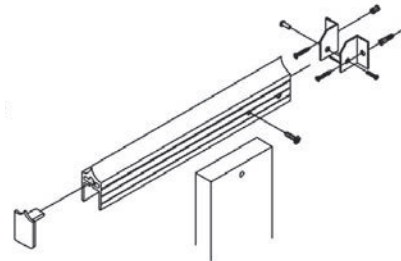
SIDE ELEVATION



FLOOR MOUNT



HEADRAIL BRACE



NOTE: Job-Specific Specifications for all orders are located on shop drawing layouts.

* HEATSINC: Heatsinc is to be placed on the bottom of the panels & doors. (If specified)

(Drawings are not to scale)

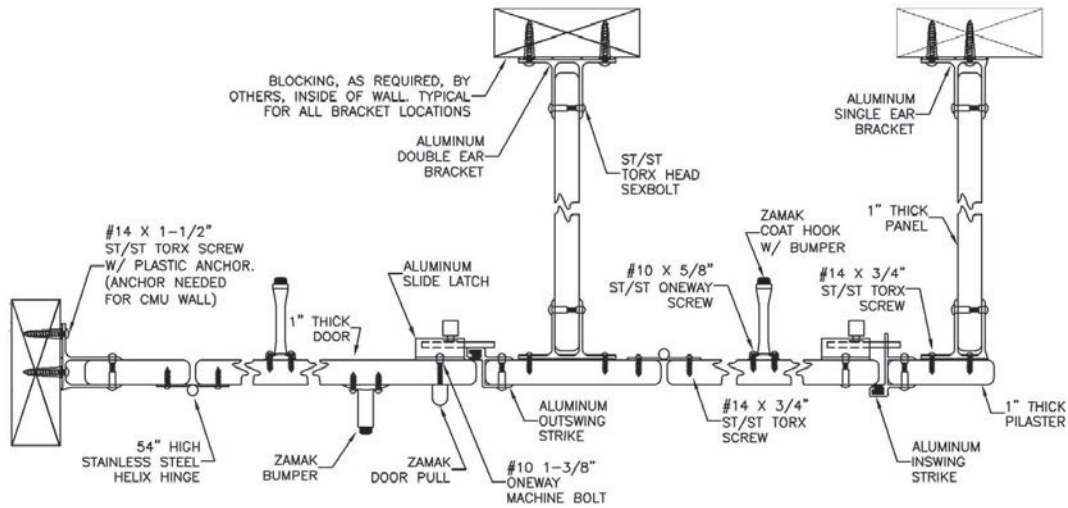
Drawings for all configuration options are available at www.scrantonproducts.com and on the memory stick attached to the binder.



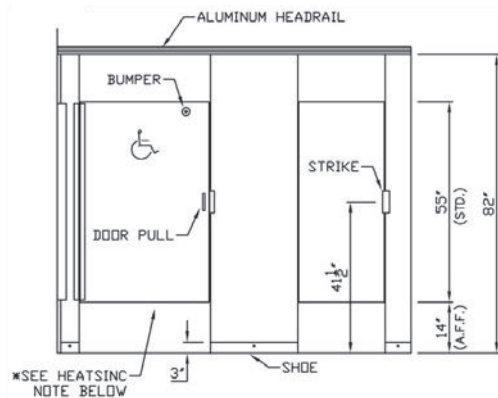
FLOOR-MOUNTED OVERHEAD-BRACED

54" Stainless Steel Continuous Helix Hinge Continuous Aluminum Brackets

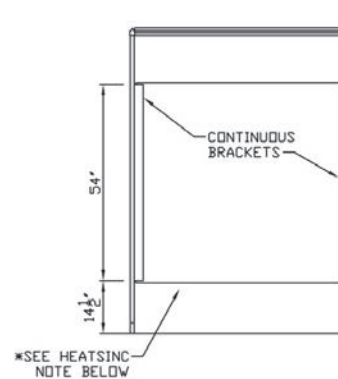
PLAN ELEVATION



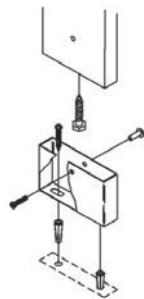
FRONT ELEVATION



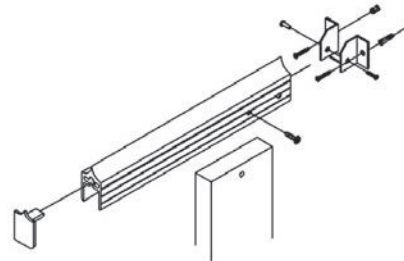
SIDE ELEVATION



FLOOR MOUNT



HEADRAIL BRACE



NOTE: Job-Specific Specifications for all orders are located on shop drawing layouts.

* HEATSINC: Heatsinc is to be placed on the bottom of the panels & doors. (If specified)

(Drawings are not to scale)

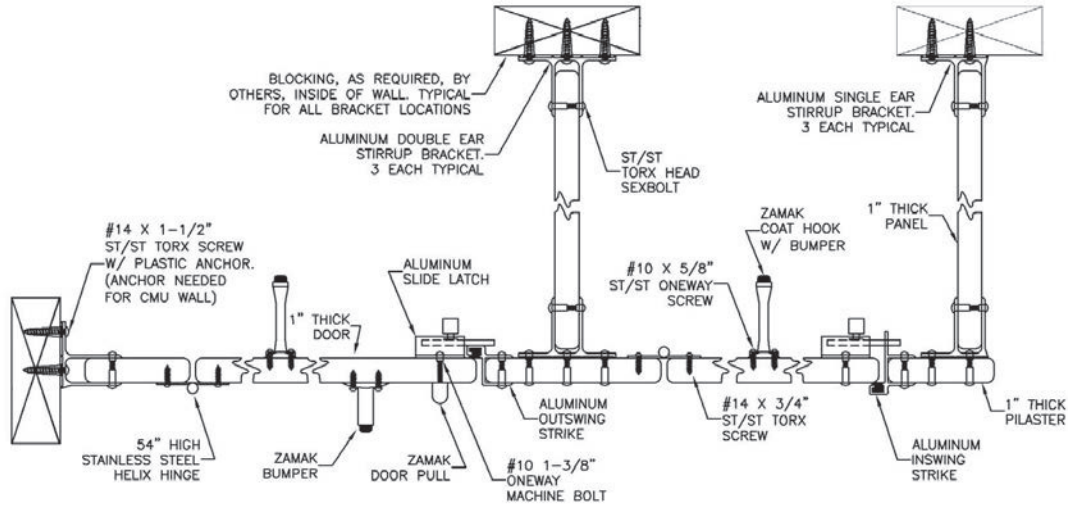
Drawings for all configuration options are available at www.scrantonproducts.com and on the memory stick attached to the binder.



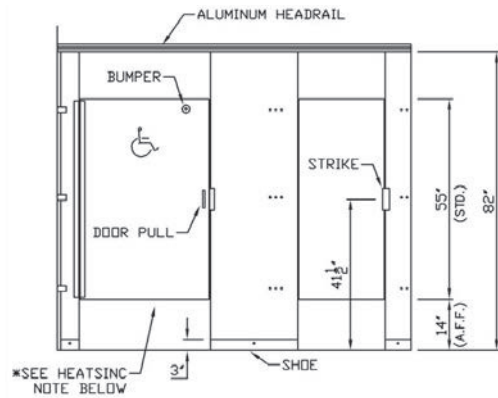
FLOOR-MOUNTED OVERHEAD-BRACED

54" Stainless Steel Continuous Helix Hinge Stirrup Brackets

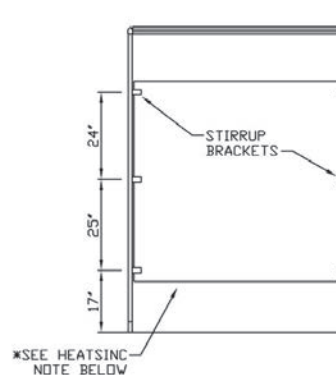
PLAN ELEVATION



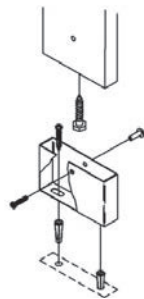
FRONT ELEVATION



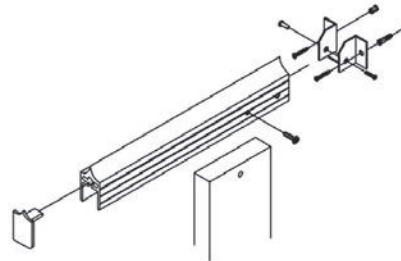
SIDE ELEVATION



FLOOR MOUNT



HEADRAIL BRACE



NOTE: Job-Specific Specifications for all orders are located on shop drawing layouts.

* HEATSINC: Heatsinc is to be placed on the bottom of the panels & doors. (If specified)

(Drawings are not to scale)

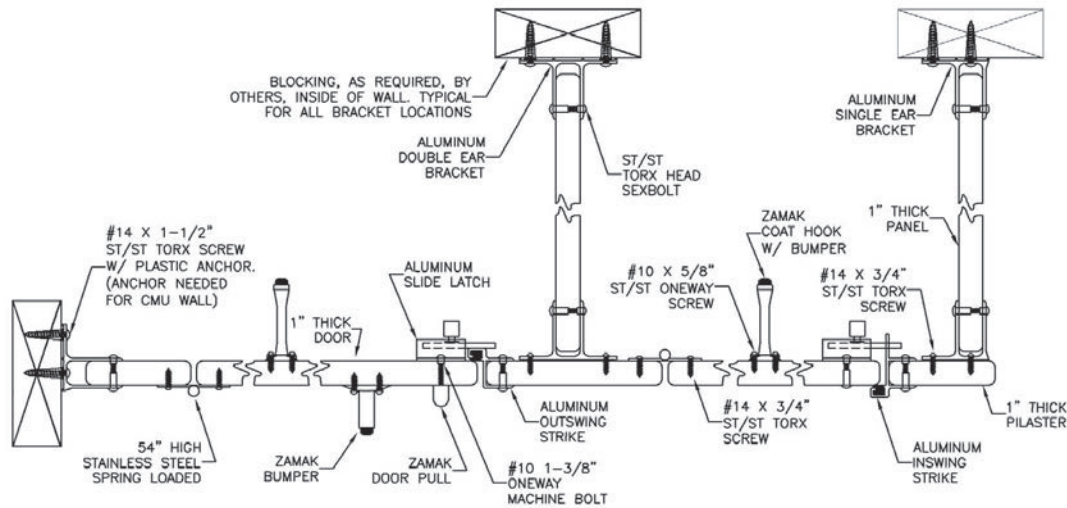
Drawings for all configuration options are available at www.scrantonproducts.com and on the memory stick attached to the binder.



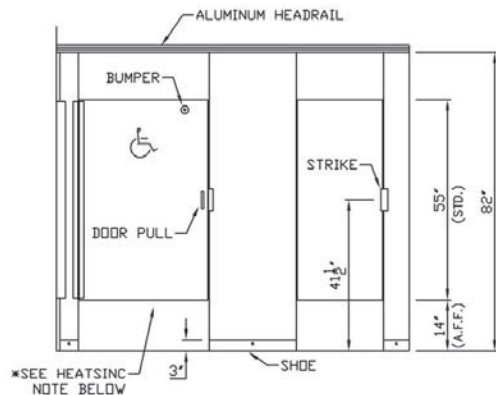
FLOOR-MOUNTED OVERHEAD-BRACED

54" Stainless Steel Continuous Spring Hinge Continuous Aluminum Brackets

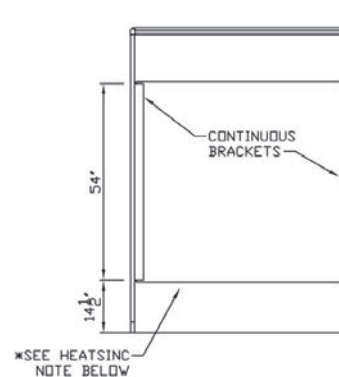
PLAN ELEVATION



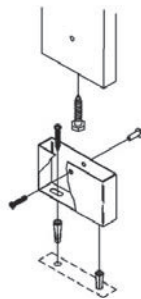
FRONT ELEVATION



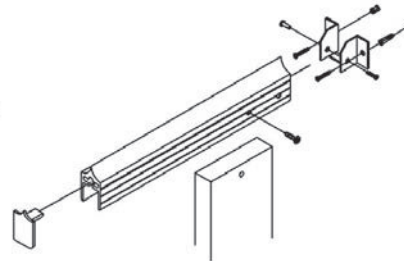
SIDE ELEVATION



FLOOR MOUNT



HEADRAIL BRACE



NOTE: Job-Specific Specifications for all orders are located on shop drawing layouts.

* HEATSINC: Heatsinc is to be placed on the bottom of the panels & doors. (If specified)

(Drawings are not to scale)

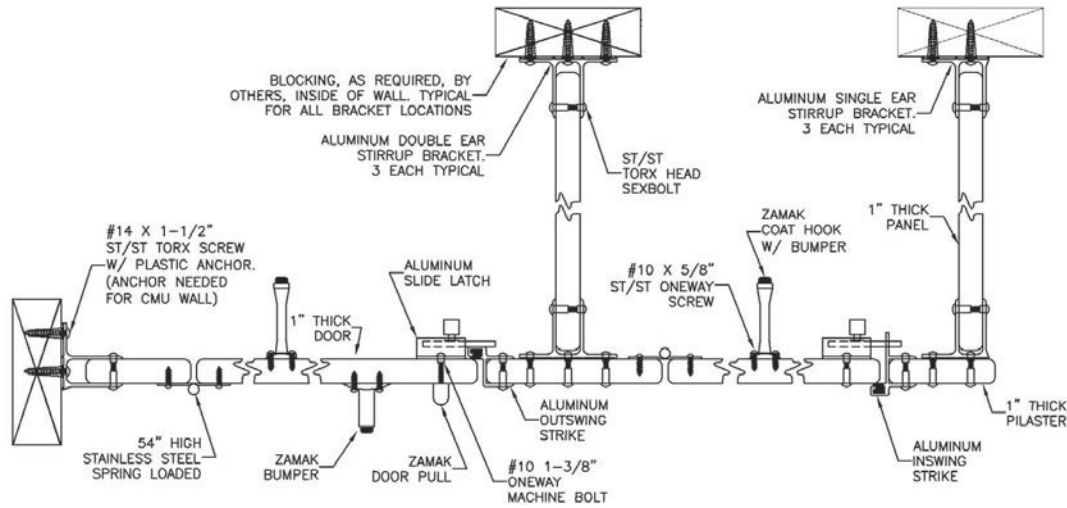
Drawings for all configuration options are available at www.scrantonproducts.com and on the memory stick attached to the binder.



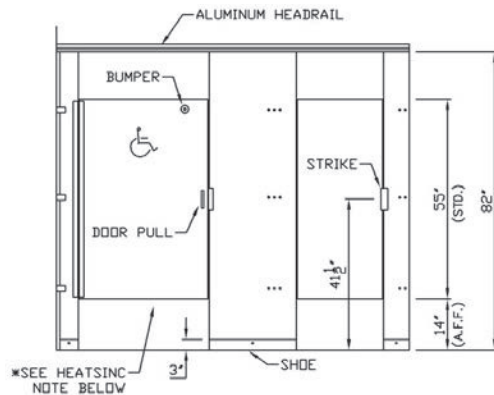
FLOOR-MOUNTED OVERHEAD-BRACED

54" Stainless Steel Continuous Spring Hinge Stirrup Brackets

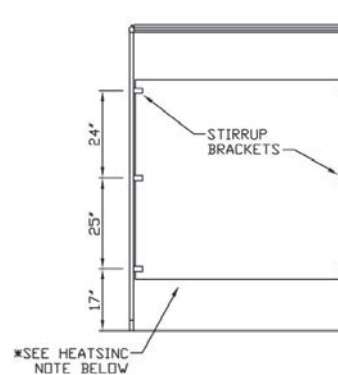
PLAN ELEVATION



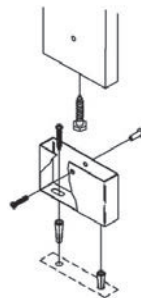
FRONT ELEVATION



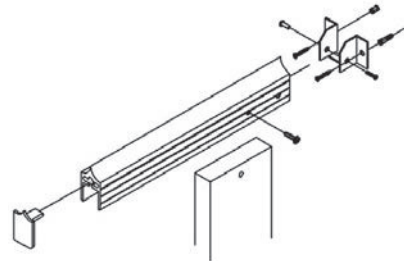
SIDE ELEVATION



FLOOR MOUNT



HEADRAIL BRACE



NOTE: Job-Specific Specifications for all orders are located on shop drawing layouts.

* HEATSINC: Heatsinc is to be placed on the bottom of the panels & doors. (If specified)

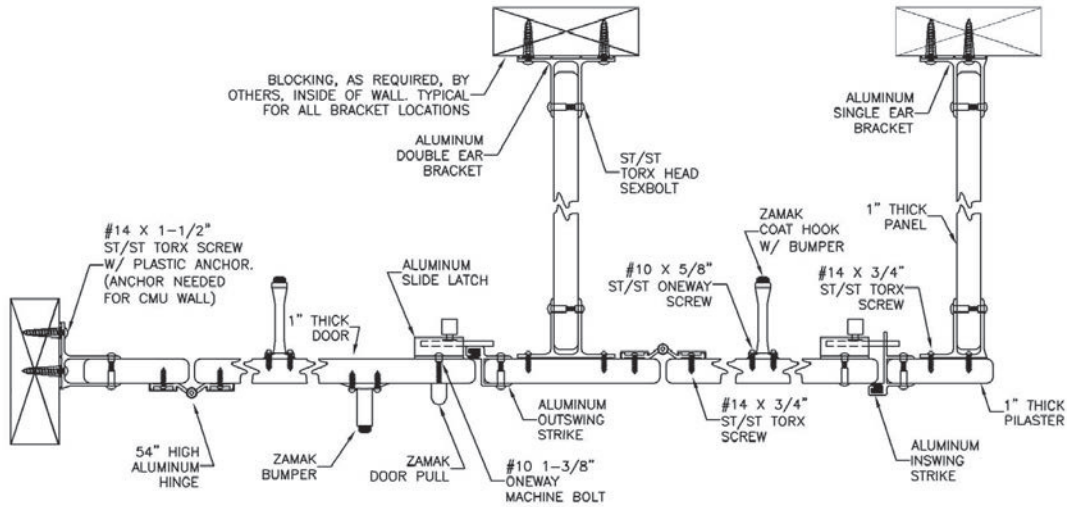
(Drawings are not to scale)

Drawings for all configuration options are available at www.scrantonproducts.com and on the memory stick attached to the binder.

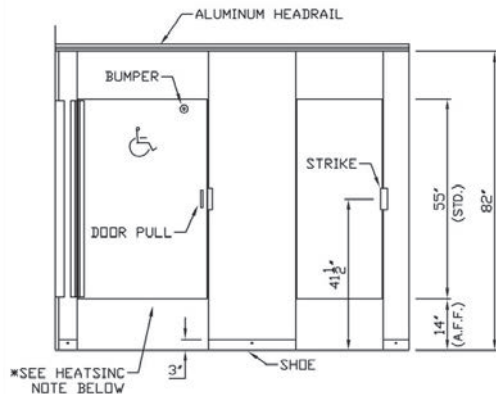
FLOOR-MOUNTED OVERHEAD-BRACED

54" Surface Mounted Aluminum Continuous Hinge Continuous Aluminum Brackets

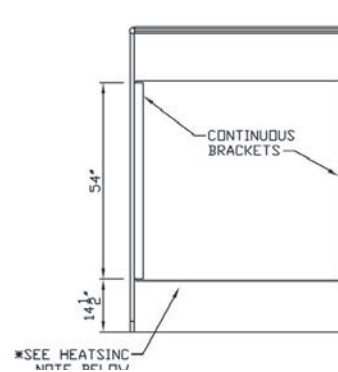
PLAN ELEVATION



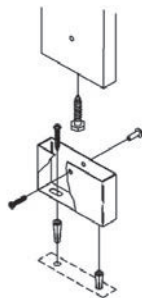
FRONT ELEVATION



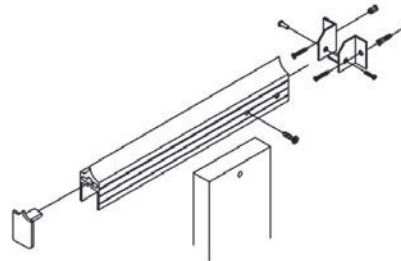
SIDE ELEVATION



FLOOR MOUNT



HEADRAIL BRACE



NOTE: Job-Specific Specifications for all orders are located on shop drawing layouts.

* HEATSINC: Heatsinc is to be placed on the bottom of the panels & doors. (If specified)

(Drawings are not to scale)

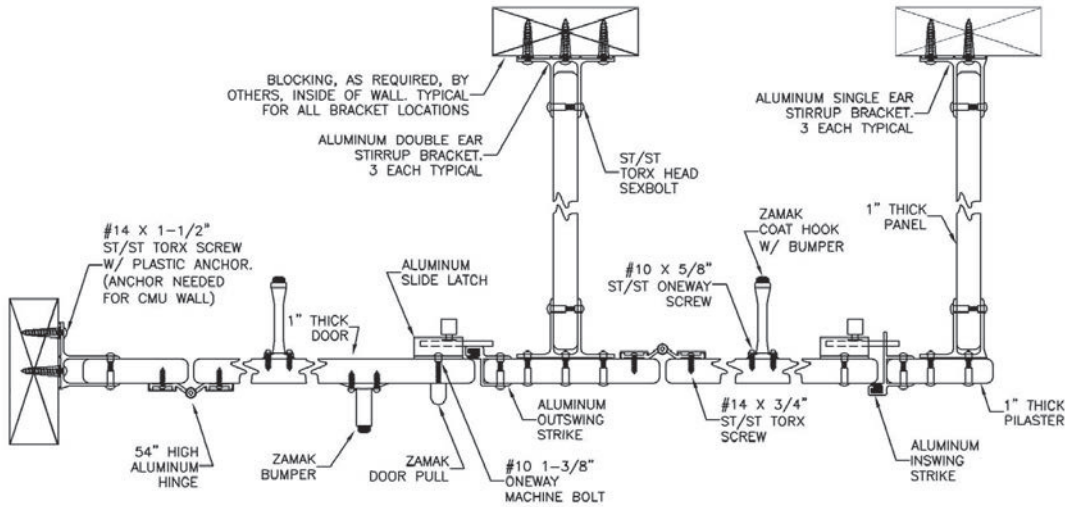
Drawings for all configuration options are available at www.scrantonproducts.com and on the memory stick attached to the binder.



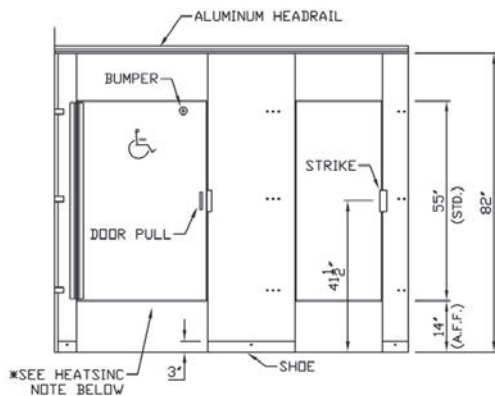
FLOOR-MOUNTED OVERHEAD-BRACED

54" Surface Mounted Aluminum Continuous Hinge Stirrup Brackets

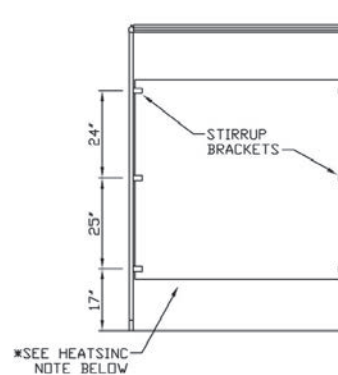
PLAN ELEVATION



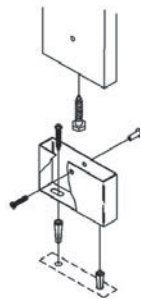
FRONT ELEVATION



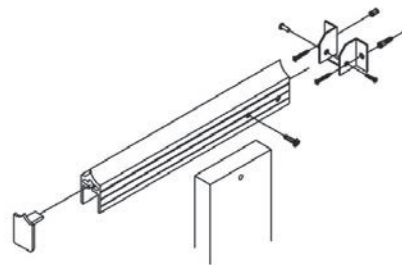
SIDE ELEVATION



FLOOR MOUNT



HEADRAIL BRACE



NOTE: Job-Specific Specifications for all orders are located on shop drawing layouts.

* HEATSINC: Heatsinc is to be placed on the bottom of the panels & doors. (If specified)

(Drawings are not to scale)

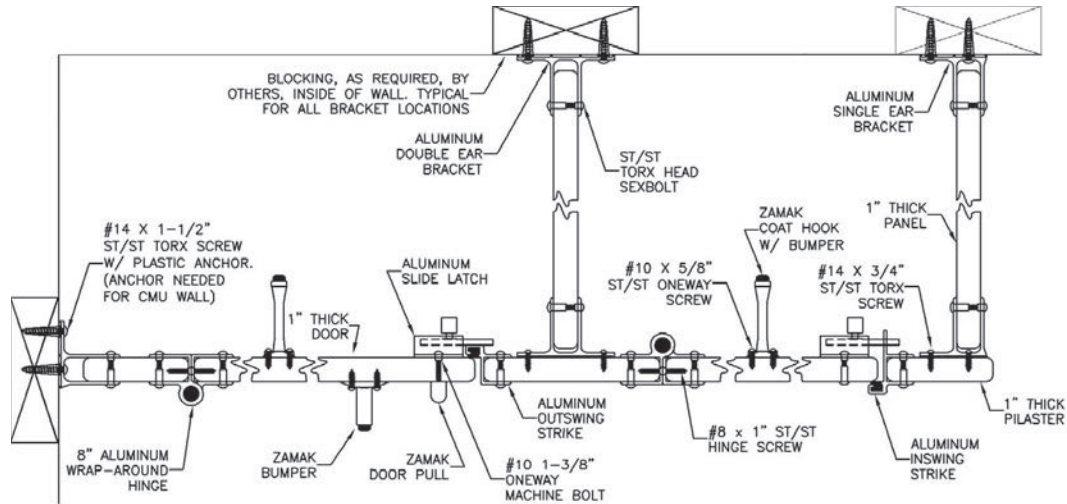
Drawings for all configuration options are available at www.scrantonproducts.com and on the memory stick attached to the binder.



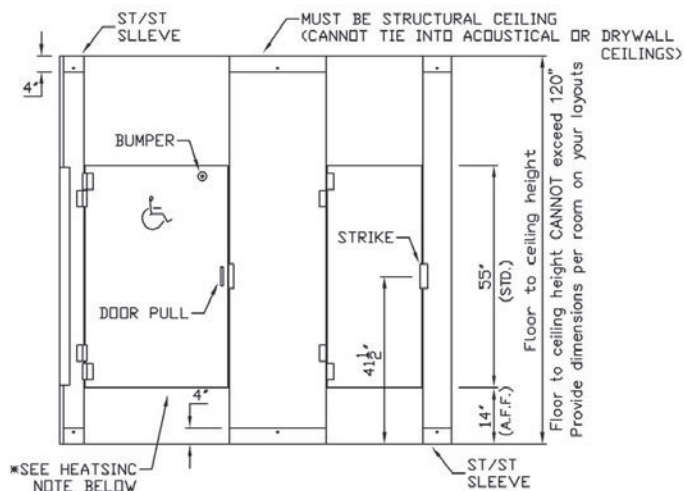
FLOOR TO CEILING

8" Aluminum Wrap-Around Hinge Continuous Aluminum Brackets

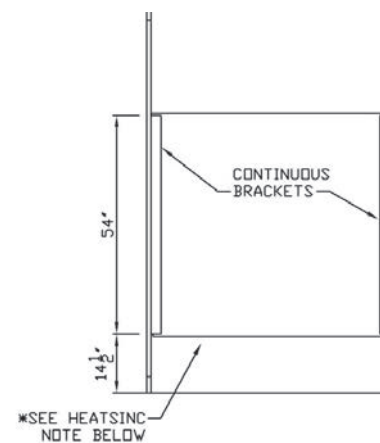
PLAN ELEVATION



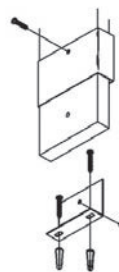
FRONT ELEVATION



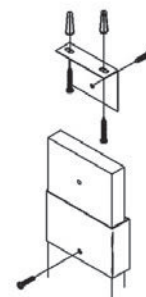
SIDE ELEVATION



FLOOR MOUNT



CEILING MOUNT



NOTE: Job-Specific Specifications for all orders are located on shop drawing layouts.

* HEATSINC: Heatsinc is to be placed on the bottom of the panels & doors. (If specified)

(Drawings are not to scale)

Drawing shown with 8" wrap-around hinge. Please see individual section for all hardware options.

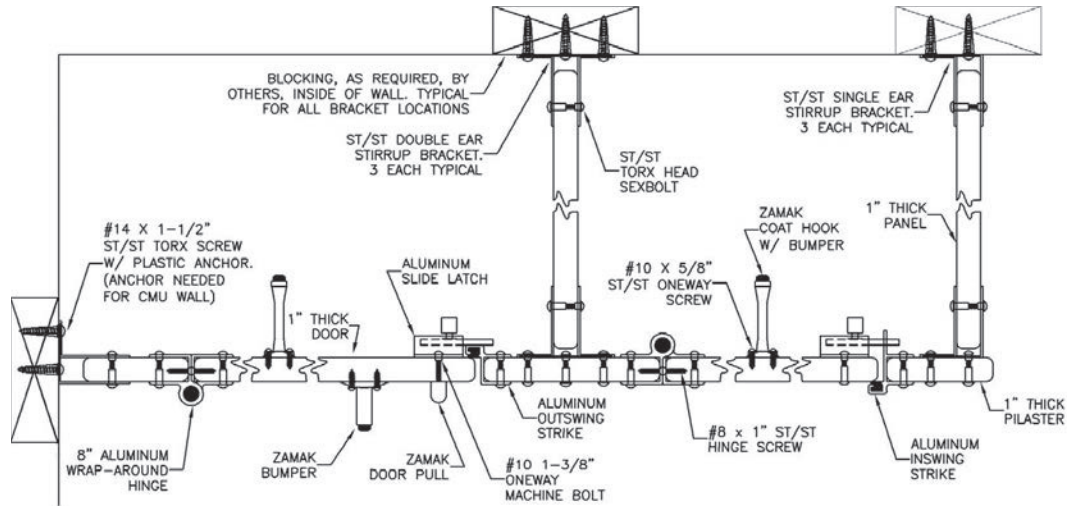
Drawings for all configuration options are available at www.scrantonproducts.com and on the memory stick attached to the binder.



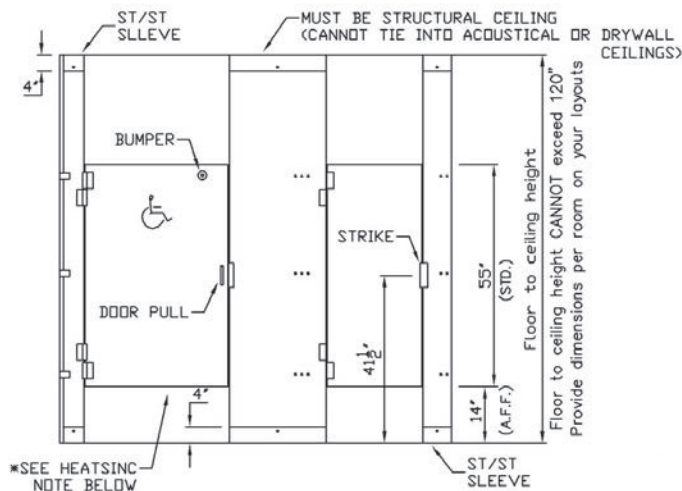
FLOOR TO CEILING

8" Aluminum Wrap-Around Hinge Stainless Steel Stirrup Brackets

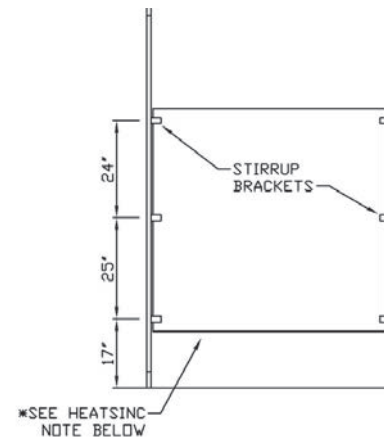
PLAN ELEVATION



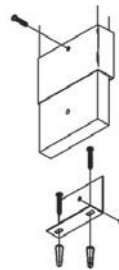
FRONT ELEVATION



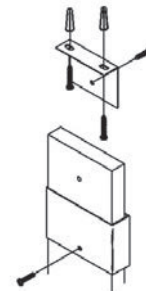
SIDE ELEVATION



FLOOR MOUNT



CEILING MOUNT



NOTE: Job-Specific Specifications for all orders are located on shop drawing layouts.

* HEATSINC: Heatsinc is to be placed on the bottom of the panels & doors. (If specified)

(Drawings are not to scale)

Drawing shown with 8" wrap-around hinge. Please see individual section for all hardware options.

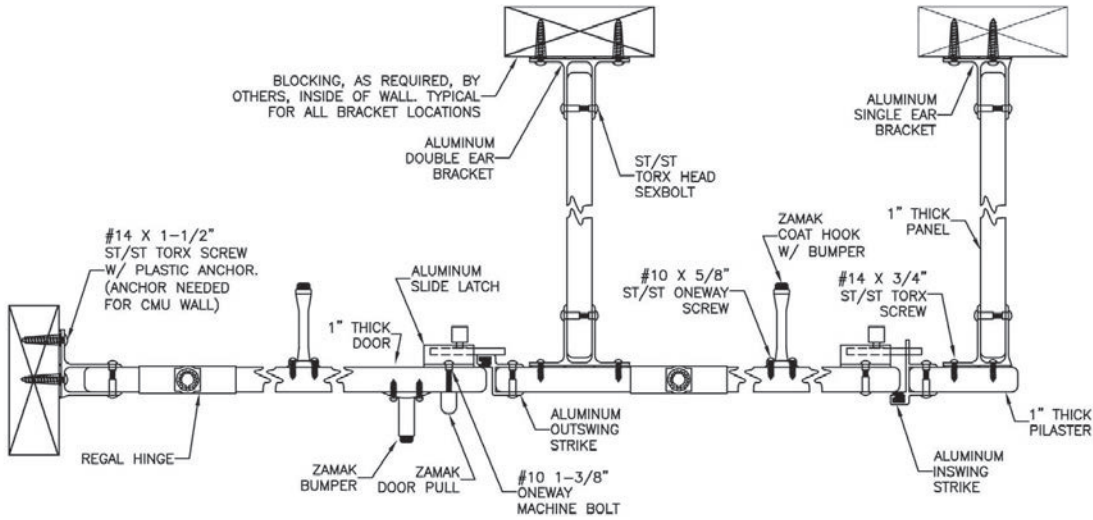
Drawings for all configuration options are available at www.scrantonproducts.com and on the memory stick attached to the binder.



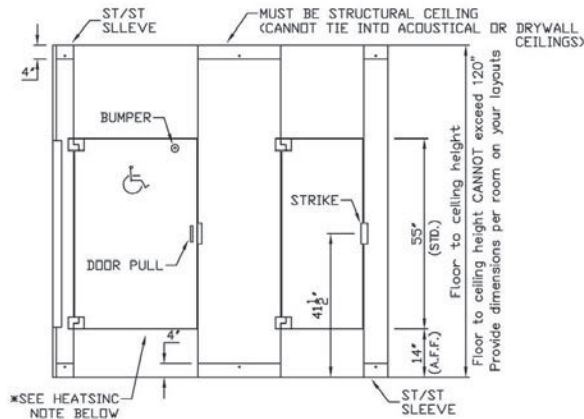
FLOOR TO CEILING

Regal Hinge Continuous Aluminum Brackets

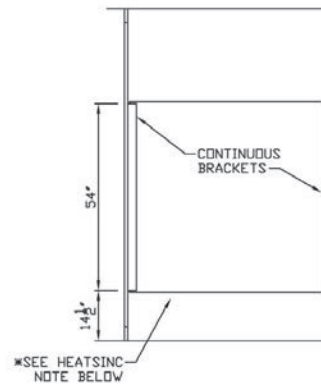
PLAN ELEVATION



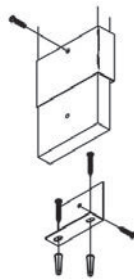
FRONT ELEVATION



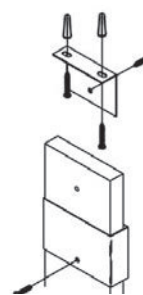
SIDE ELEVATION



FLOOR MOUNT



CEILING MOUNT



NOTE: Job-Specific Specifications for all orders are located on shop drawing layouts.

* HEATSINC: Heatsinc is to be placed on the bottom of the panels & doors. (If specified)

(Drawings are not to scale)

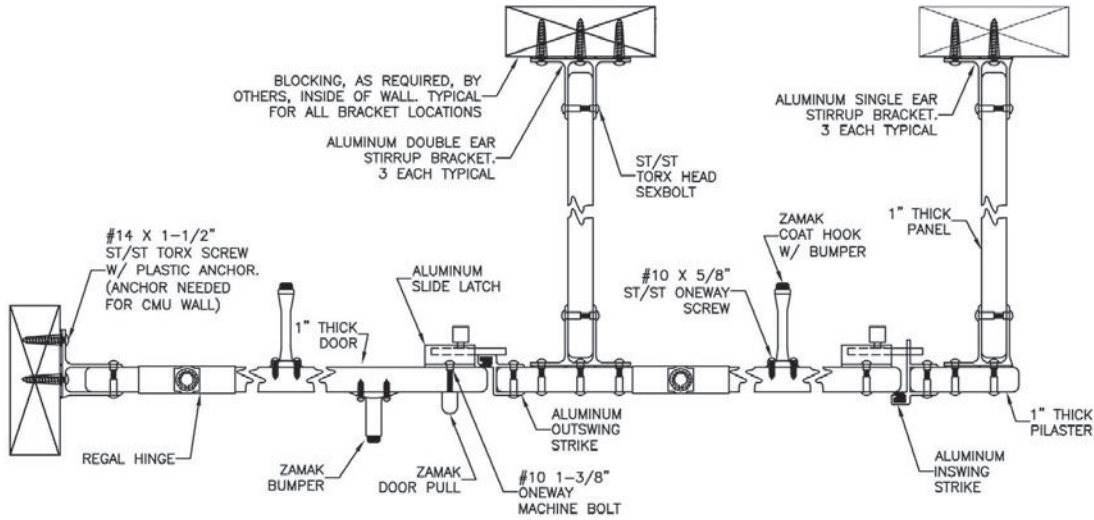
Drawings for all configuration options are available at www.scrantonproducts.com and on the memory stick attached to the binder.



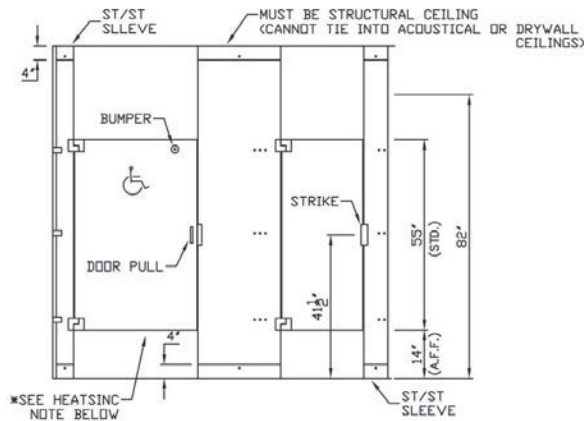
FLOOR TO CEILING

Regal Hinge Stirrup Brackets

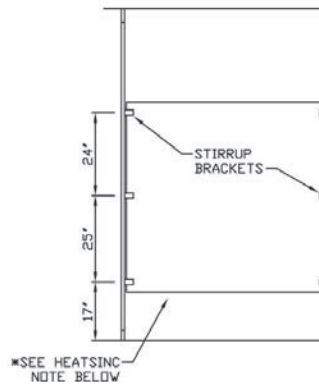
PLAN ELEVATION



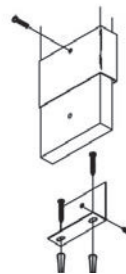
FRONT ELEVATION



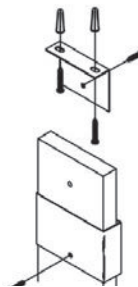
SIDE ELEVATION



FLOOR MOUNT



CEILING MOUNT



NOTE: Job-Specific Specifications for all orders are located on shop drawing layouts.

* HEATSINC: Heatsinc is to be placed on the bottom of the panels & doors. (If specified)

(Drawings are not to scale)

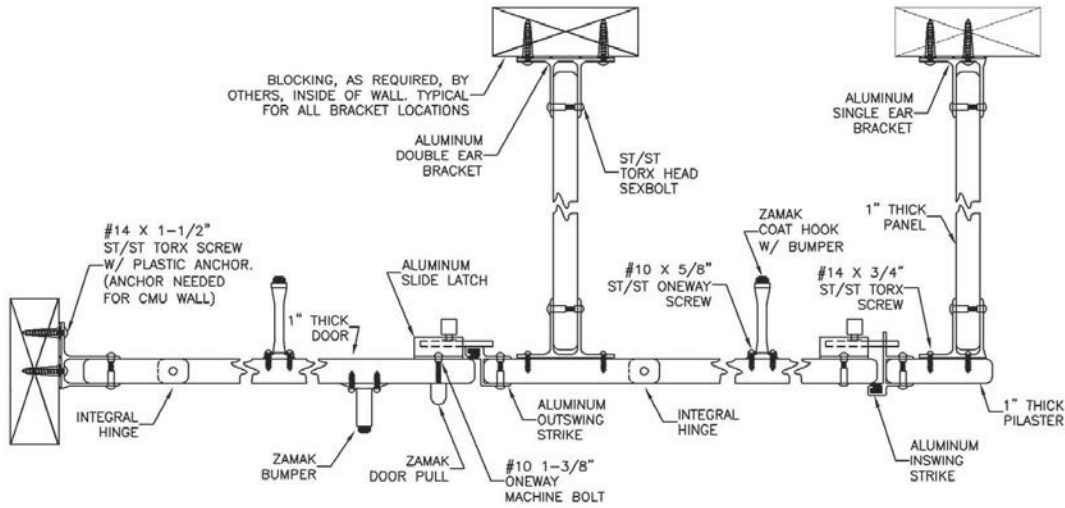
Drawings for all configuration options are available at www.scrantonproducts.com and on the memory stick attached to the binder.



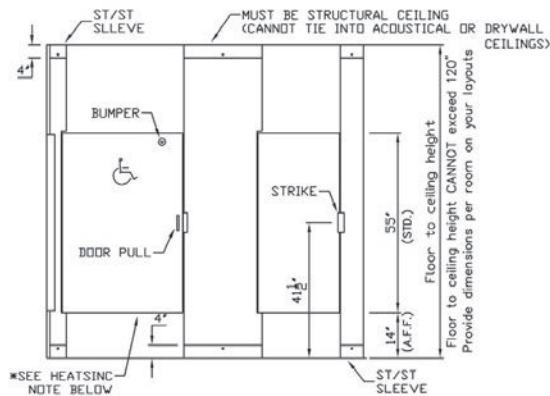
FLOOR TO CEILING

Stealth Integral Hinge Continuous Aluminum Brackets

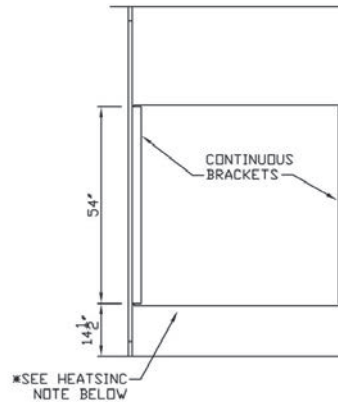
PLAN ELEVATION



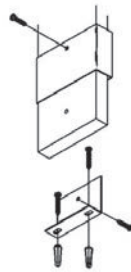
FRONT ELEVATION



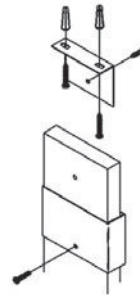
SIDE ELEVATION



FLOOR MOUNT



CEILING MOUNT



NOTE: Job-Specific Specifications for all orders are located on shop drawing layouts.

* HEATSINC: Heatsinc is to be placed on the bottom of the panels & doors. (If specified)

(Drawings are not to scale)

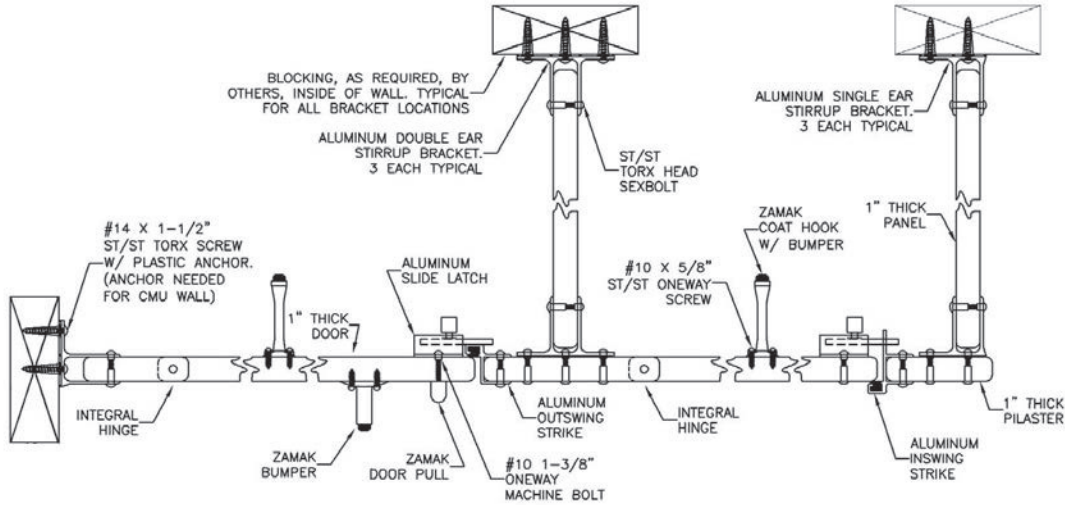
Drawings for all configuration options are available at www.scrantonproducts.com and on the memory stick attached to the binder.



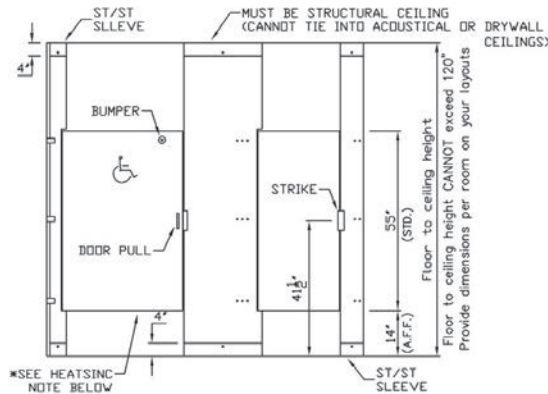
FLOOR TO CEILING

Stealth Integral Hinge Stirrup Brackets

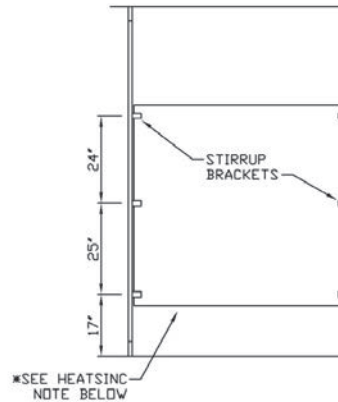
PLAN ELEVATION



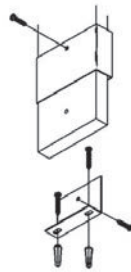
FRONT ELEVATION



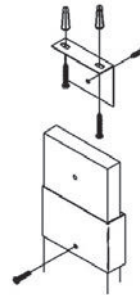
SIDE ELEVATION



FLOOR MOUNT



CEILING MOUNT



NOTE: Job-Specific Specifications for all orders are located on shop drawing layouts.

* HEATSINC: Heatsinc is to be placed on the bottom of the panels & doors. (If specified)

(Drawings are not to scale)

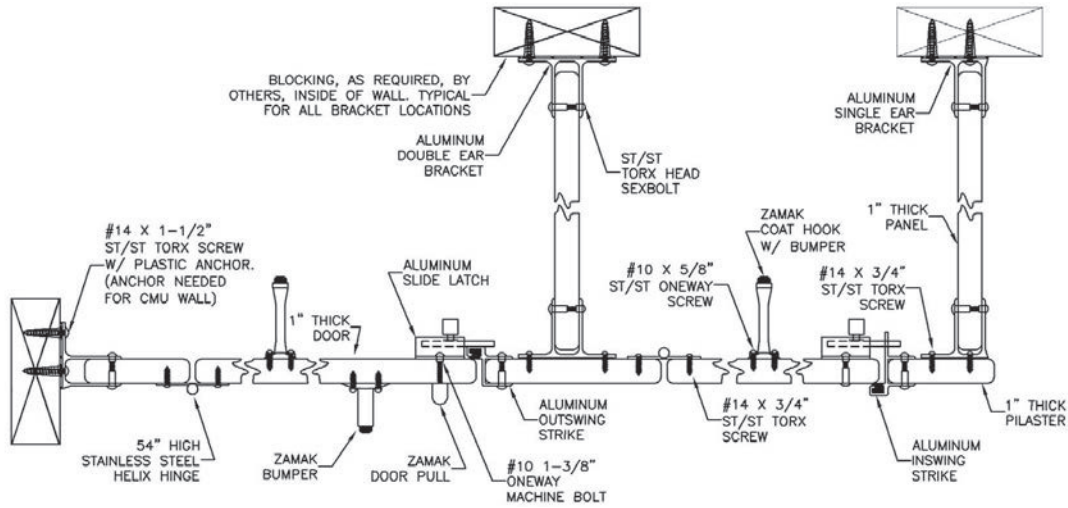
Drawings for all configuration options are available at www.scrantonproducts.com and on the memory stick attached to the binder.



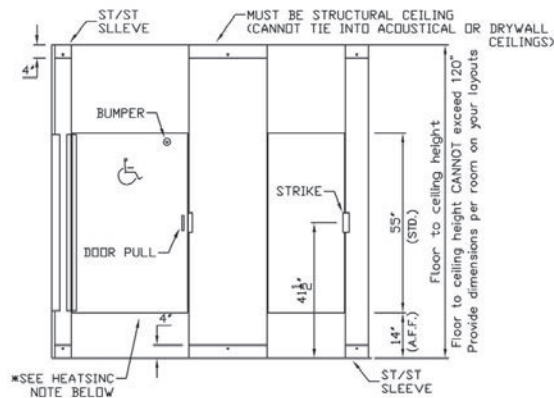
FLOOR TO CEILING

54" Stainless Steel Continuous Helix Hinge Continuous Aluminum Brackets

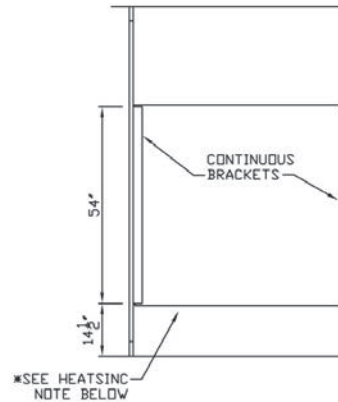
PLAN ELEVATION



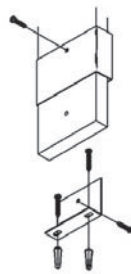
FRONT ELEVATION



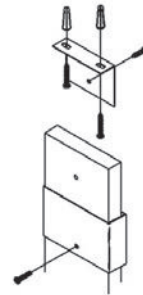
SIDE ELEVATION



FLOOR MOUNT



CEILING MOUNT



NOTE: Job-Specific Specifications for all orders are located on shop drawing layouts.

* HEATSINC: Heatsinc is to be placed on the bottom of the panels & doors. (If specified)

(Drawings are not to scale)

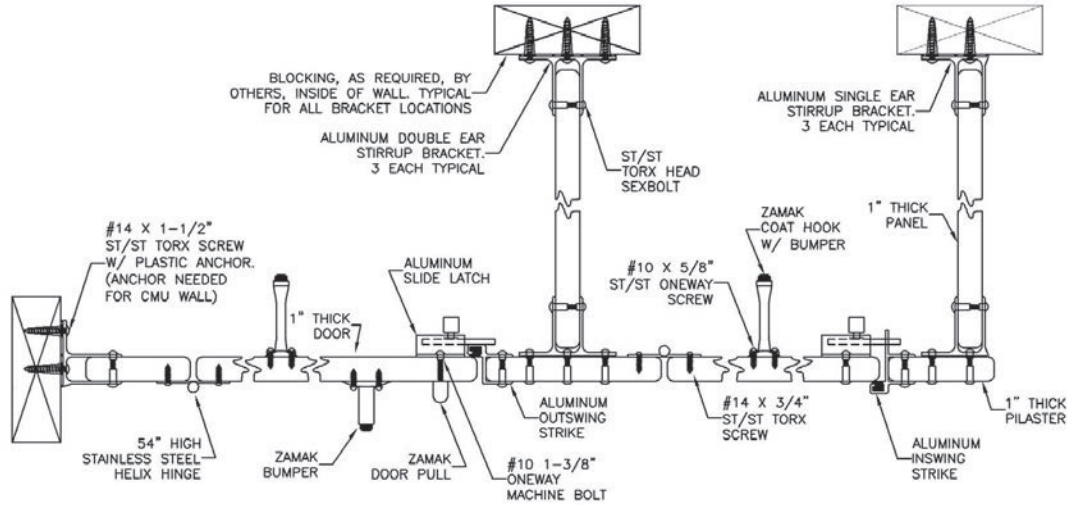
Drawings for all configuration options are available at www.scrantonproducts.com and on the memory stick attached to the binder.



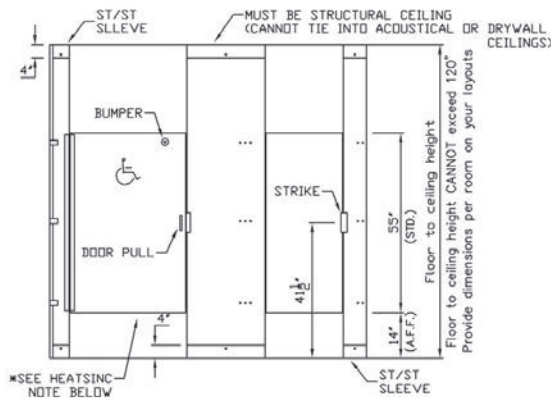
FLOOR TO CEILING

54" Stainless Steel Continuous Helix Hinge Stirrup Brackets

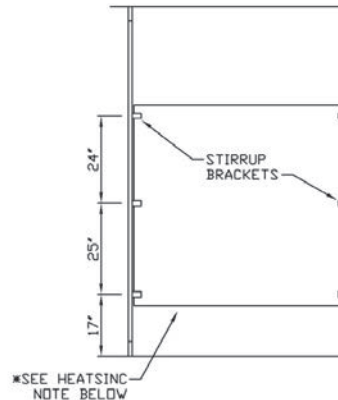
PLAN ELEVATION



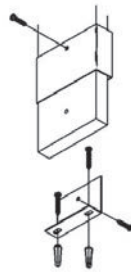
FRONT ELEVATION



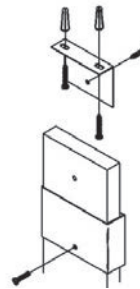
SIDE ELEVATION



FLOOR MOUNT



CEILING MOUNT



NOTE: Job-Specific Specifications for all orders are located on shop drawing layouts.

* HEATSINC: Heatsinc is to be placed on the bottom of the panels & doors. (If specified)

(Drawings are not to scale)

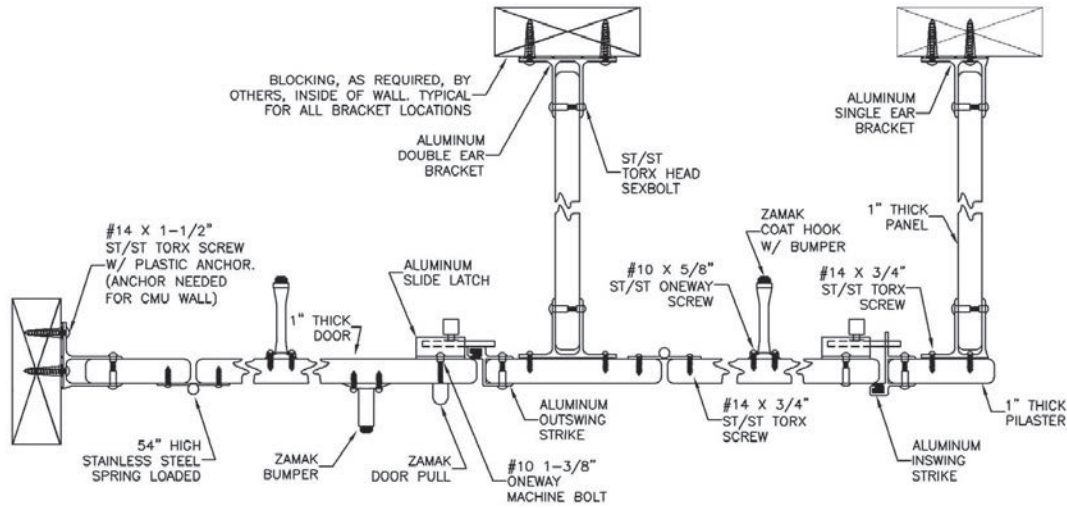
Drawings for all configuration options are available at www.scrantonproducts.com and on the memory stick attached to the binder.



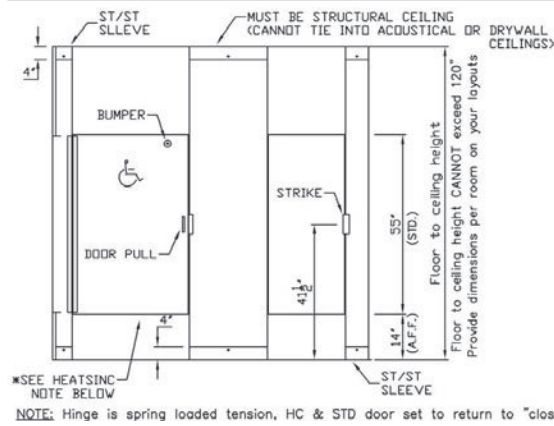
FLOOR TO CEILING

54" Stainless Steel Spring Loaded Hinge Continuous Aluminum Brackets

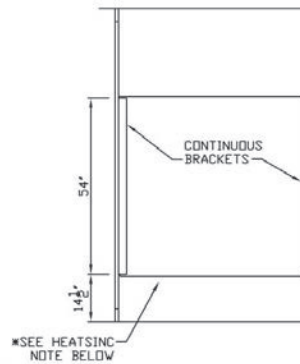
PLAN ELEVATION



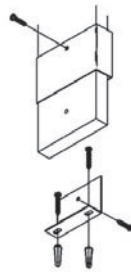
FRONT ELEVATION



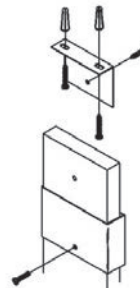
SIDE ELEVATION



FLOOR MOUNT



CEILING MOUNT



NOTE: Job-Specific Specifications for all orders are located on shop drawing layouts.

* HEATSINC: Heatsinc is to be placed on the bottom of the panels & doors. (If specified)

(Drawings are not to scale)

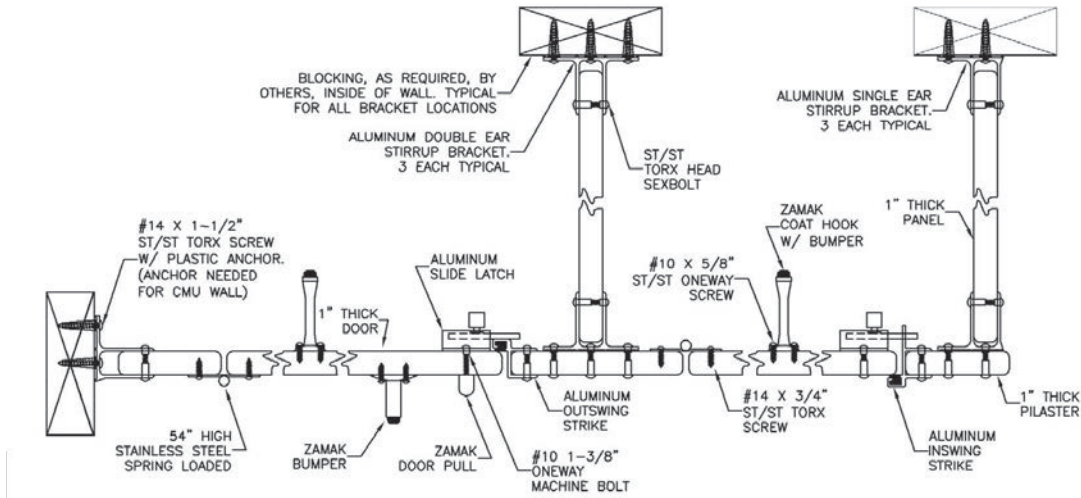
Drawings for all configuration options are available at www.scrantonproducts.com and on the memory stick attached to the binder.



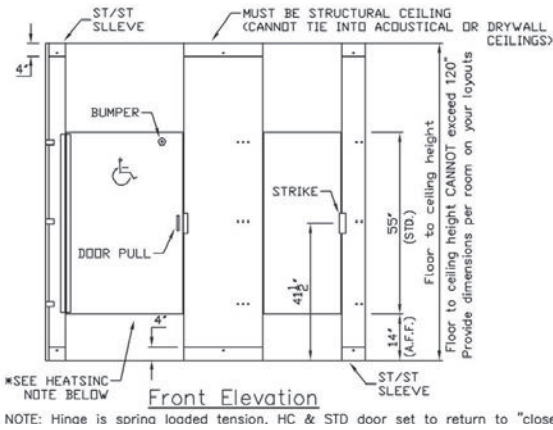
FLOOR TO CEILING

54" Stainless Steel Spring Loaded Hinge Stirrup Brackets

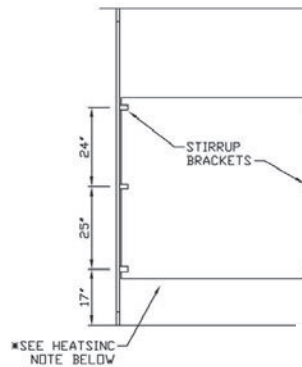
PLAN ELEVATION



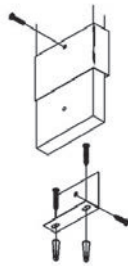
FRONT ELEVATION



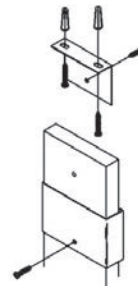
SIDE ELEVATION



FLOOR MOUNT



CEILING MOUNT



NOTE: Job-Specific Specifications for all orders are located on shop drawing layouts.

* HEATSINC: Heatsinc is to be placed on the bottom of the panels & doors. (If specified)

(Drawings are not to scale)

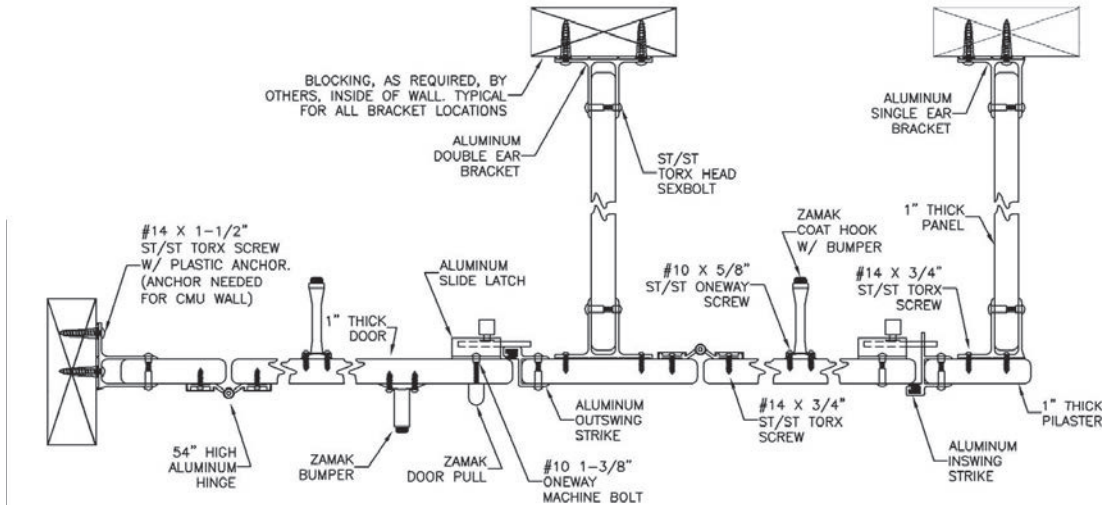
Drawings for all configuration options are available at www.scrantonproducts.com and on the memory stick attached to the binder.



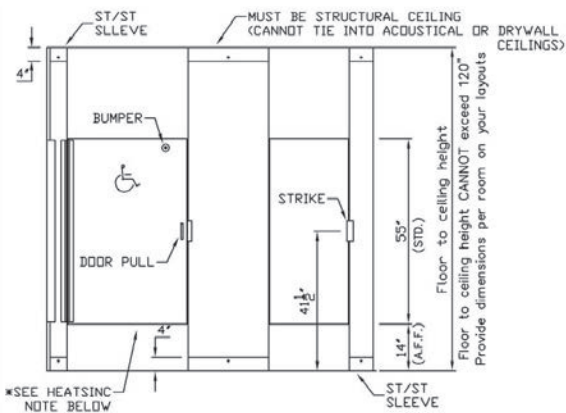
FLOOR TO CEILING

54" Aluminum Continuous Hinge Continuous Aluminum Brackets

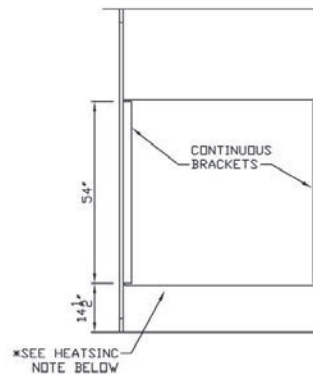
PLAN ELEVATION



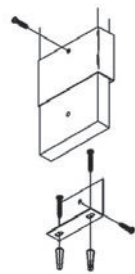
FRONT ELEVATION



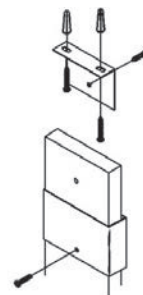
SIDE ELEVATION



FLOOR MOUNT



CEILING MOUNT



NOTE: Job-Specific Specifications for all orders are located on shop drawing layouts.

* HEATSINC: Heatsinc is to be placed on the bottom of the panels & doors. (If specified)

(Drawings are not to scale)

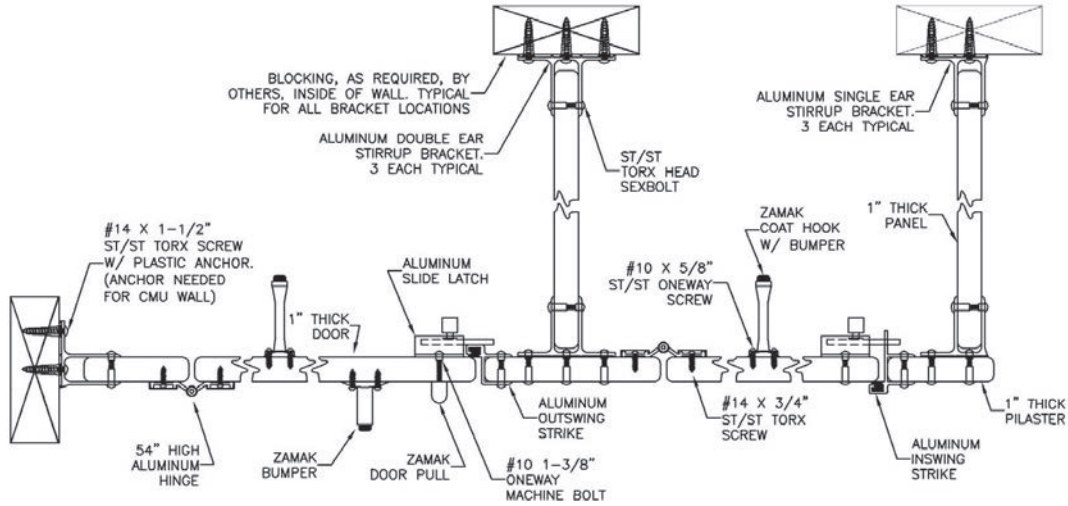
Drawings for all configuration options are available at www.scrantonproducts.com and on the memory stick attached to the binder.



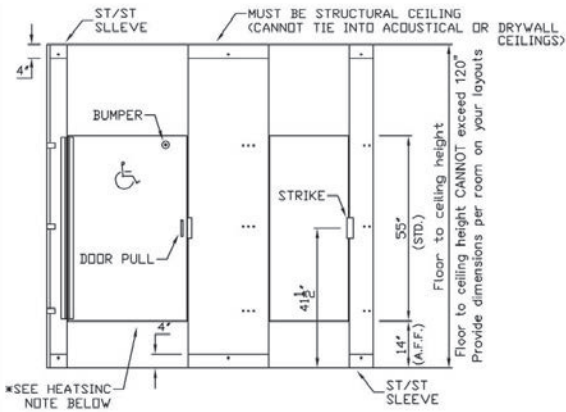
FLOOR TO CEILING

54" Aluminum Continuous Hinge Stirrup Brackets

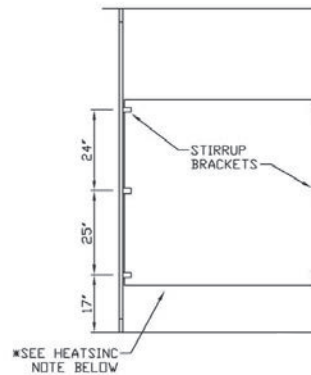
PLAN ELEVATION



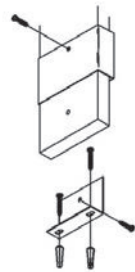
FRONT ELEVATION



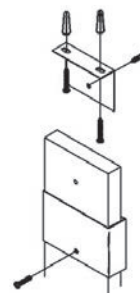
SIDE ELEVATION



FLOOR MOUNT



CEILING MOUNT



NOTE: Job-Specific Specifications for all orders are located on shop drawing layouts.

* HEATSINC: Heatsinc is to be placed on the bottom of the panels & doors. (If specified)

(Drawings are not to scale)

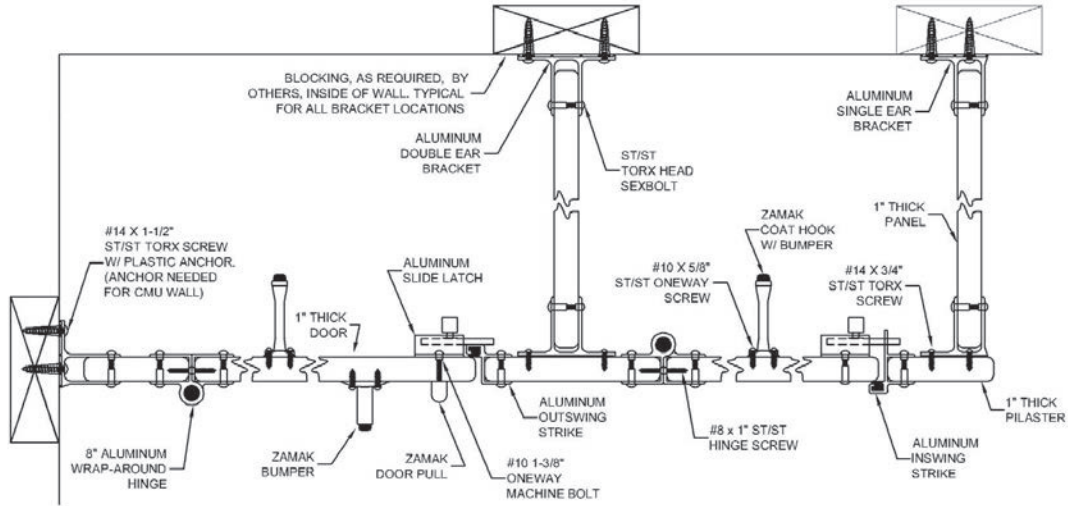
Drawings for all configuration options are available at www.scrantonproducts.com and on the memory stick attached to the binder.



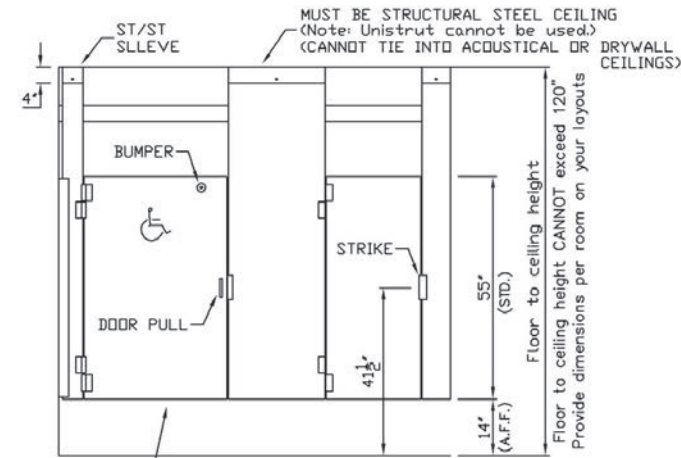
CEILING HUNG

8" Aluminum Wrap-Around Hinge Continuous Aluminum Brackets

PLAN ELEVATION



FRONT ELEVATION

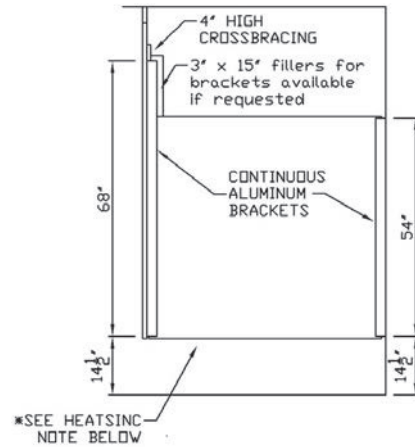


*SEE HEATSINC NOTE BELOW

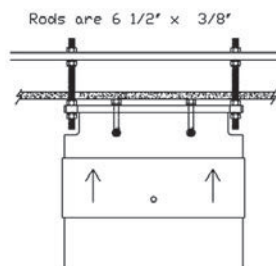
Crossbracing note:

Will only be supplied on ceiling height's of 92" or larger.

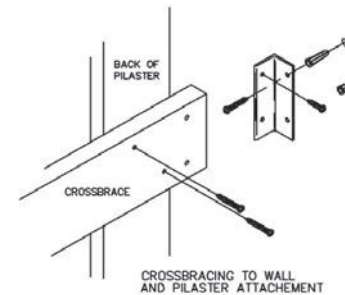
SIDE ELEVATION



CEILING MOUNT



CROSSBRACE



NOTE: Job-Specific Specifications for all orders are located on shop drawing layouts.

* HEATSINC: Heatsinc is to be placed on the bottom of the panels & doors. (If specified)

(Drawings are not to scale)

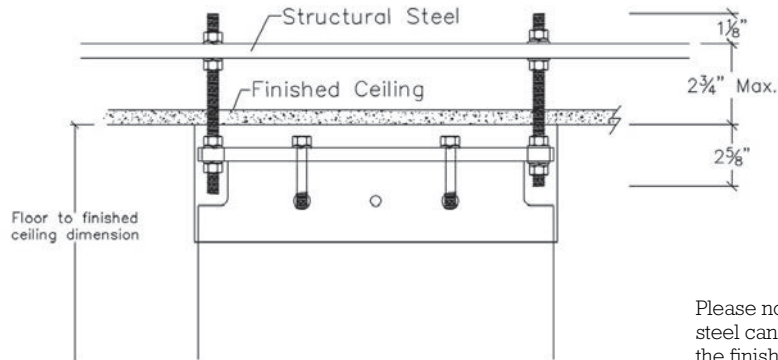
Drawing shown with 8" wrap-around hinge. Please see individual section for all hardware options.

Drawings for all configuration options are available at www.scrantonproducts.com and on the memory stick attached to the binder.

CEILING HUNG

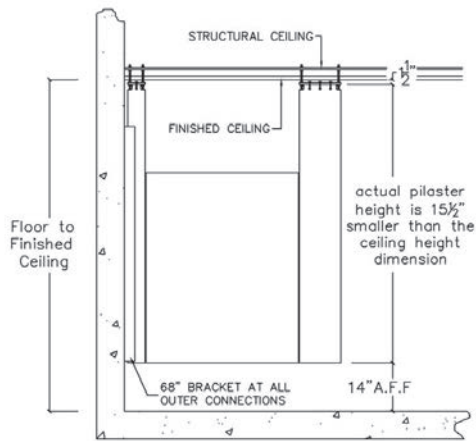
8" Aluminum Wrap-Around Hinge Continuous Aluminum Brackets

CEILING BOLT DETAIL



Please note that the height to the top of the steel can be no more than 2 3/4" higher from the finished ceiling.

CEILING HUNG



Ceiling Beam can only be structural steel.
No other types are recommended.
Only 6 1/2" threaded rods are recommended.

NOTE: Job-Specific Specifications for all orders are located on shop drawing layouts.

* HEATSINC: Heatsinc is to be placed on the bottom of the panels & doors. (If specified)

(Drawings are not to scale)

Drawing shown with 8" wrap-around hinge. Please see individual section for all hardware options.

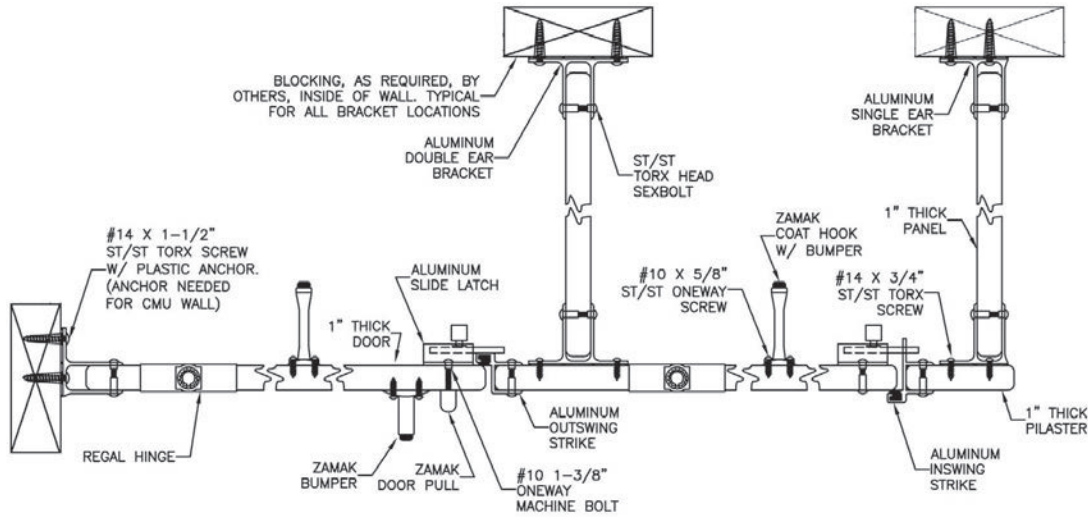
Drawings for all configuration options are available at www.scrantonproducts.com and on the memory stick attached to the binder.



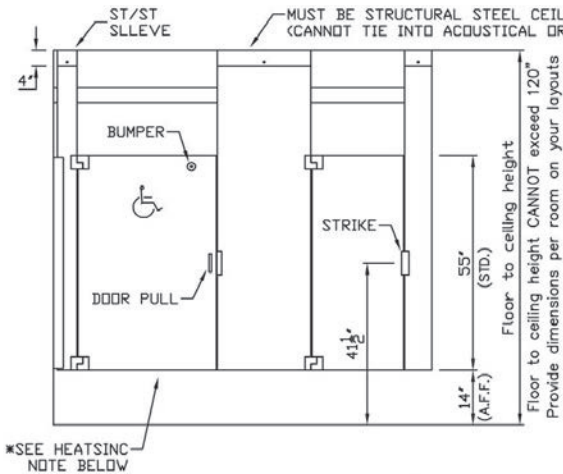
CEILING HUNG

Regal Hinge Continuous Aluminum Brackets

PLAN ELEVATION

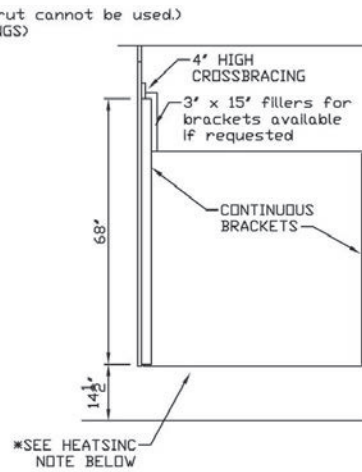


FRONT ELEVATION

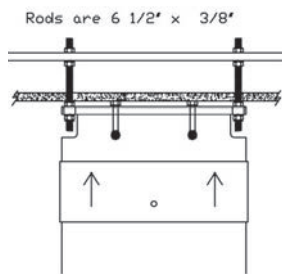


Crossbracing note: Will only be supplied on ceiling heights of 92' or larger.

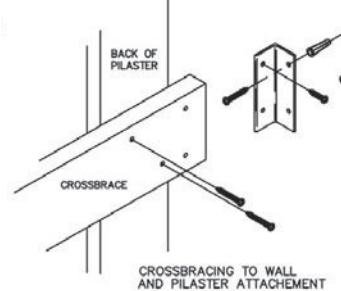
SIDE ELEVATION



CEILING MOUNT



CROSS BRACE



NOTE: Job-Specific Specifications for all orders are located on shop drawing layouts.

* HEATSINC: Heatsinc is to be placed on the bottom of the panels & doors. (If specified)

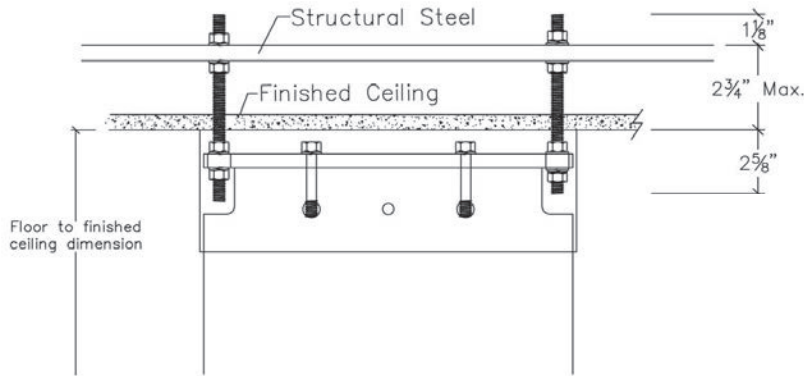
(Drawings are not to scale)

Drawings for all configuration options are available at www.scrantonproducts.com and on the memory stick attached to the binder.

CEILING HUNG

Regal Hinge Continuous Aluminum Brackets

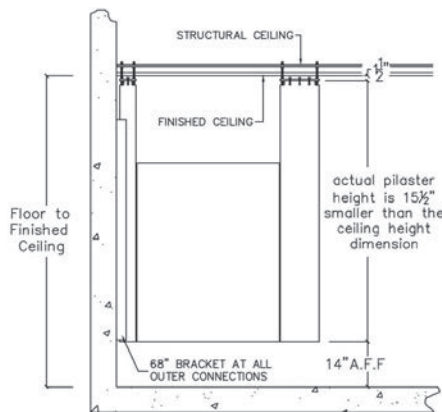
CEILING BEAM



Attention (provide the following)

Floor to finished ceiling height: _____

Please note that the height to the top of the steel can be no more than $2\frac{3}{4}"$ higher from the finished ceiling.
(See the above detail)



Ceiling Beam can only be structural steel.

No other types are recommended.

(Note: Unistrut is not considered structural steel and should not be used.)

Only $6\frac{1}{2}"$ threaded rods are recommended.

NOTE: Job-Specific Specifications for all orders are located on shop drawing layouts.

* HEATSINC: Heatsinc is to be placed on the bottom of the panels & doors. (If specified)

(Drawings are not to scale)

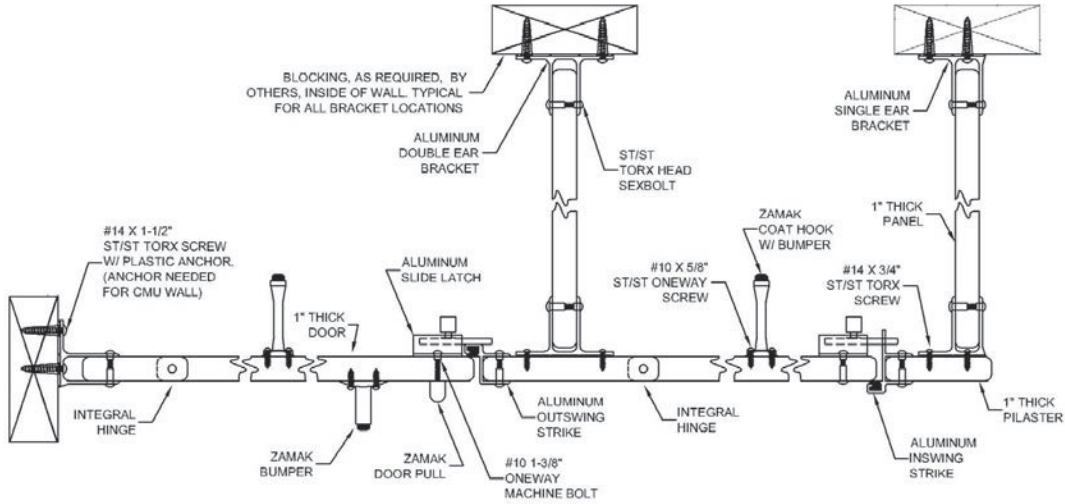
Drawings for all configuration options are available at www.scrantonproducts.com and on the memory stick attached to the binder.



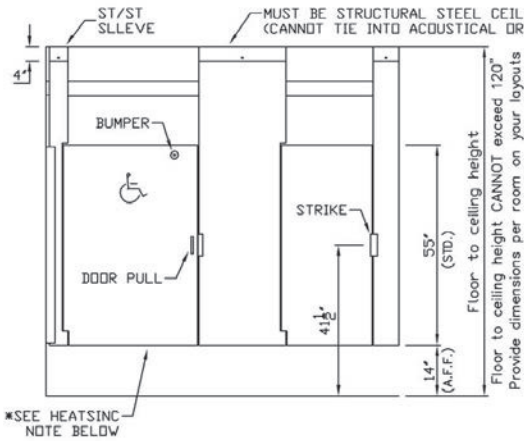
CEILING HUNG

Stealth Integral Hinge Continuous Aluminum Brackets

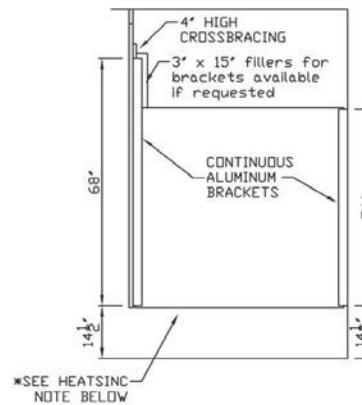
PLAN ELEVATION



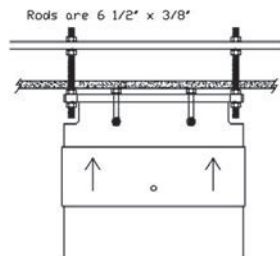
FRONT ELEVATION



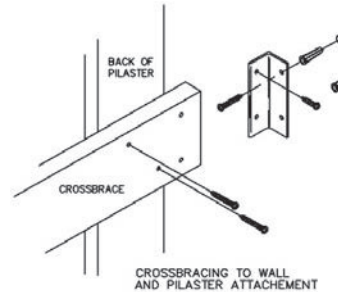
SIDE ELEVATION



CEILING MOUNT



CROSS BRACE



NOTE: Job-Specific Specifications for all orders are located on shop drawing layouts.

* HEATSINC: Heatsinc is to be placed on the bottom of the panels & doors. (If specified)

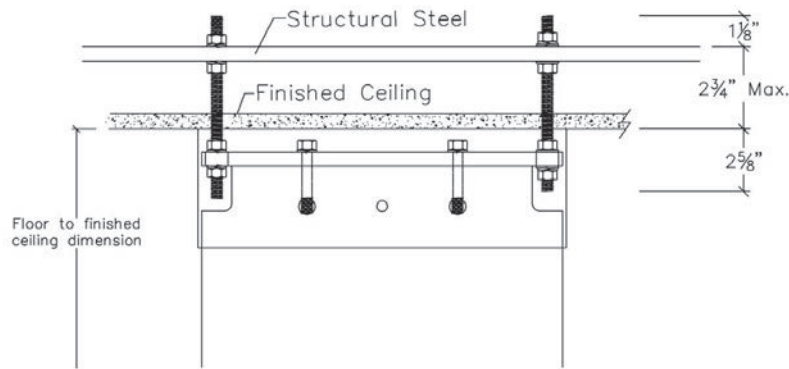
(Drawings are not to scale)

Drawings for all configuration options are available at www.scrantonproducts.com and on the memory stick attached to the binder.

CEILING HUNG

Stealth Integral Hinge Continuous Aluminum Brackets

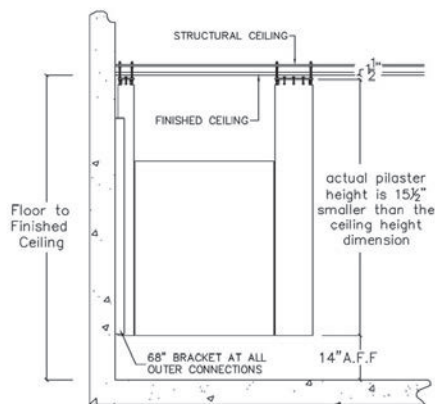
CEILING BEAM



Attention (provide the following)

Floor to finished ceiling height: _____

Please note that the height to the top of the steel can be no more than 2 3/4" higher from the finished ceiling.
(See the above detail)



Ceiling Beam can only be structural steel.

No other types are recommended.

(Note: Unistrut is not considered structural steel and should not be used.)

Only 6 1/2" threaded rods are recommended.

NOTE: Job-Specific Specifications for all orders are located on shop drawing layouts.

* HEATSINC: Heatsinc is to be placed on the bottom of the panels & doors. (If specified)

(Drawings are not to scale)

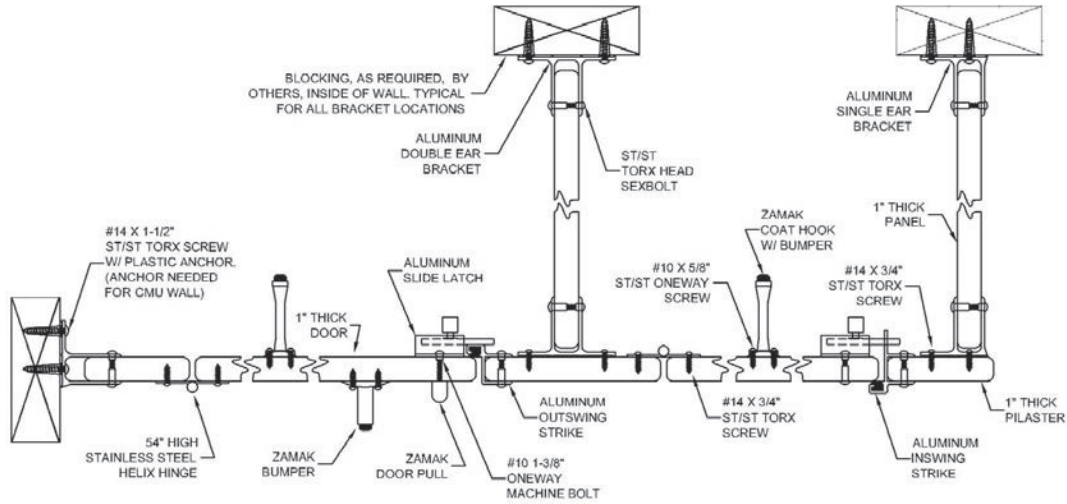
Drawings for all configuration options are available at www.scrantonproducts.com and on the memory stick attached to the binder.



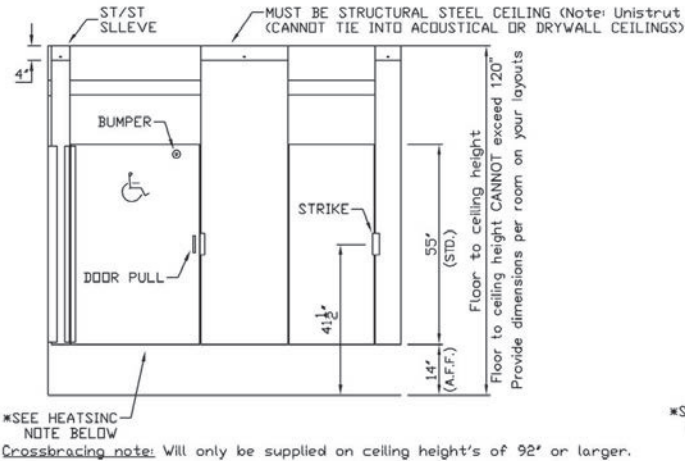
CEILING HUNG

54" Stainless Steel Continuous Helix Hinge Continuous Aluminum Brackets

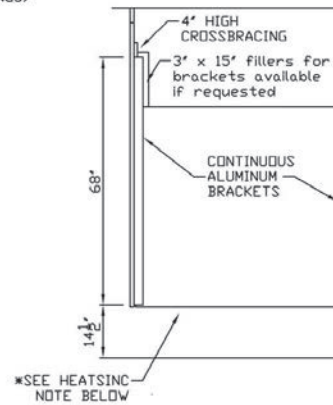
PLAN ELEVATION



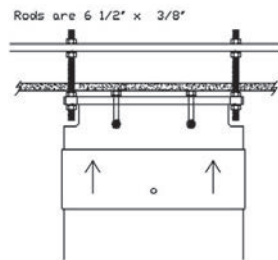
FRONT ELEVATION



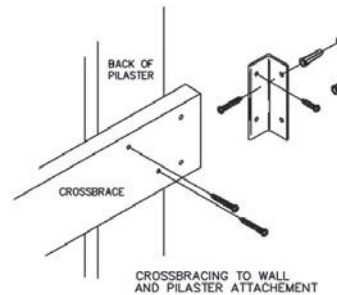
SIDE ELEVATION



CEILING MOUNT



CROSS BRACE



NOTE: Job-Specific Specifications for all orders are located on shop drawing layouts.

* HEATSINC: Heatsinc is to be placed on the bottom of the panels & doors. (If specified)

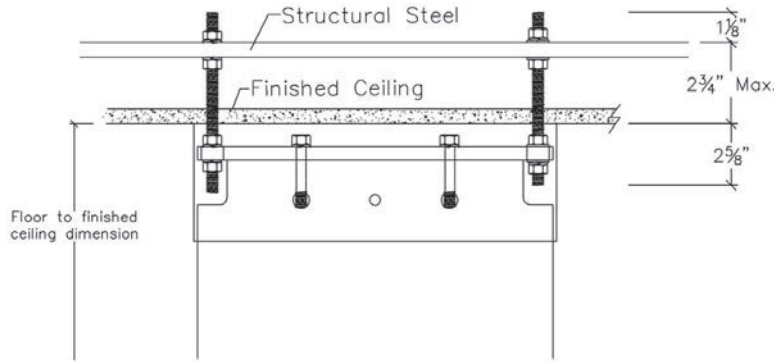
(Drawings are not to scale)

Drawings for all configuration options are available at www.scrantonproducts.com and on the memory stick attached to the binder.

CEILING HUNG

54" Stainless Steel Continuous Helix Hinge Continuous Aluminum Brackets

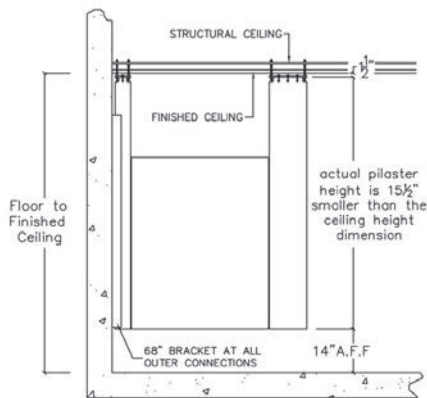
CEILING BEAM



Attention (provide the following)

Floor to finished ceiling height: _____

Please note that the height to the top of the steel can be no more than 2 3/4" higher from the finished ceiling.
(See the above detail)



Ceiling Beam can only be structural steel.

No other types are recommended.

(Note: Unistrut is not considered structural steel and should not be used.)

Only 6 1/2" threaded rods are recommended.

NOTE: Job-Specific Specifications for all orders are located on shop drawing layouts.

* HEATSINC: Heatsinc is to be placed on the bottom of the panels & doors. (If specified)

(Drawings are not to scale)

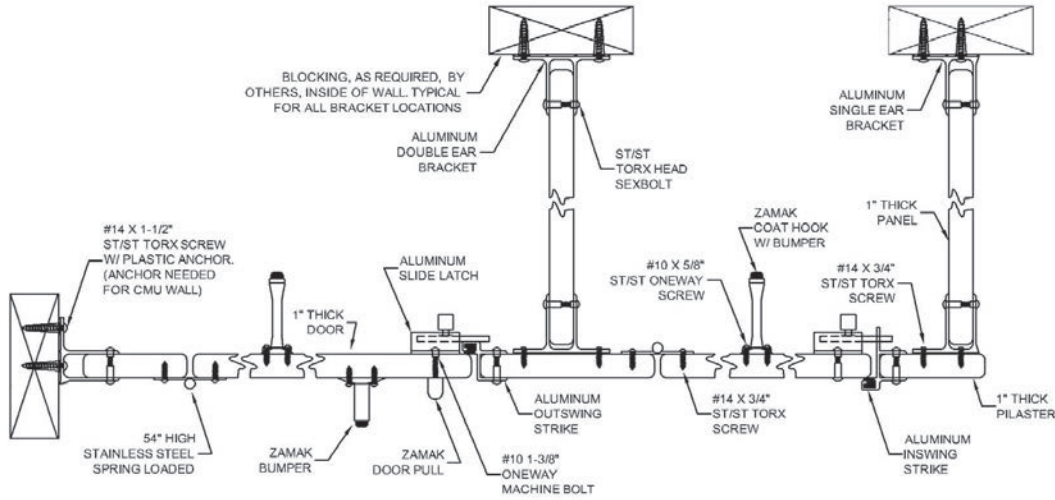
Drawings for all configuration options are available at www.scrantonproducts.com and on the memory stick attached to the binder.



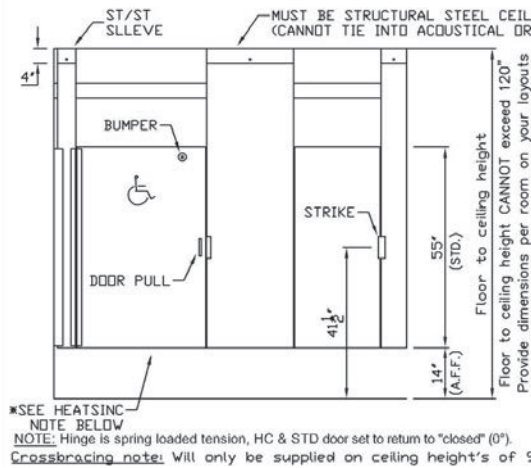
CEILING HUNG

54" Stainless Steel Continuous Spring Hinge Continuous Aluminum Brackets

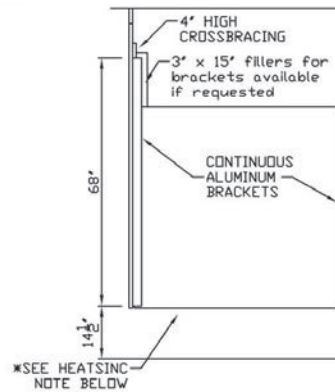
PLAN ELEVATION



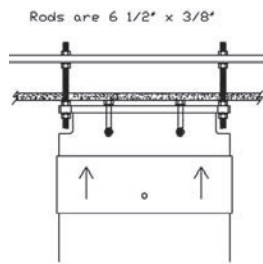
FRONT ELEVATION



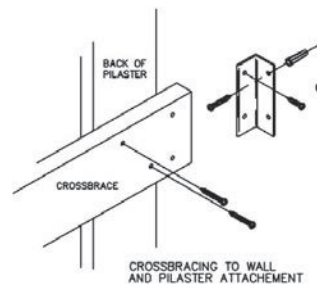
SIDE ELEVATION



CEILING MOUNT



CROSS BRACE



NOTE: Job-Specific Specifications for all orders are located on shop drawing layouts.

* HEATSINC: Heatsinc is to be placed on the bottom of the panels & doors. (If specified)

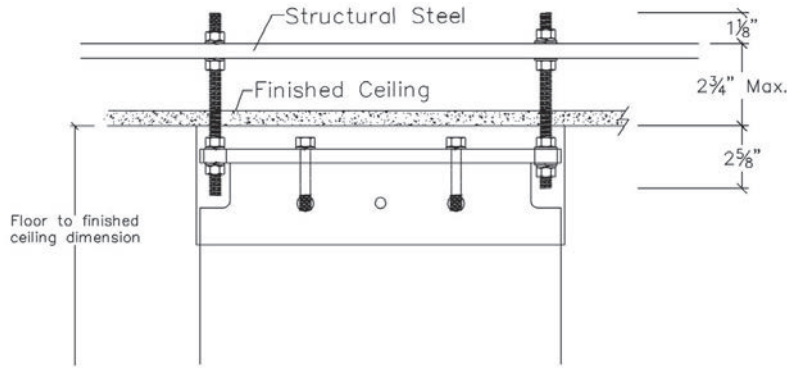
(Drawings are not to scale)

Drawings for all configuration options are available at www.scrantonproducts.com and on the memory stick attached to the binder.

CEILING HUNG

54" Stainless Steel Continuous Spring Hinge Continuous Aluminum Brackets

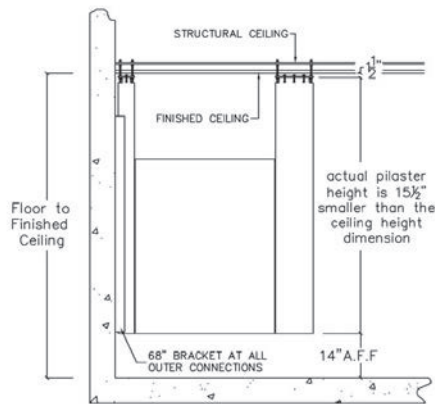
CEILING BEAM



Attention (provide the following)

Floor to finished ceiling height: _____

Please note that the height to the top of the steel can be no more than 2 3/4" higher from the finished ceiling.
(See the above detail)



Ceiling Beam can only be structural steel.

No other types are recommended.

(Note: Unistrut is not considered structural steel and should not be used.)

Only 6 1/2" threaded rods are recommended.

NOTE: Job-Specific Specifications for all orders are located on shop drawing layouts.

* HEATSINC: Heatsinc is to be placed on the bottom of the panels & doors. (If specified)

(Drawings are not to scale)

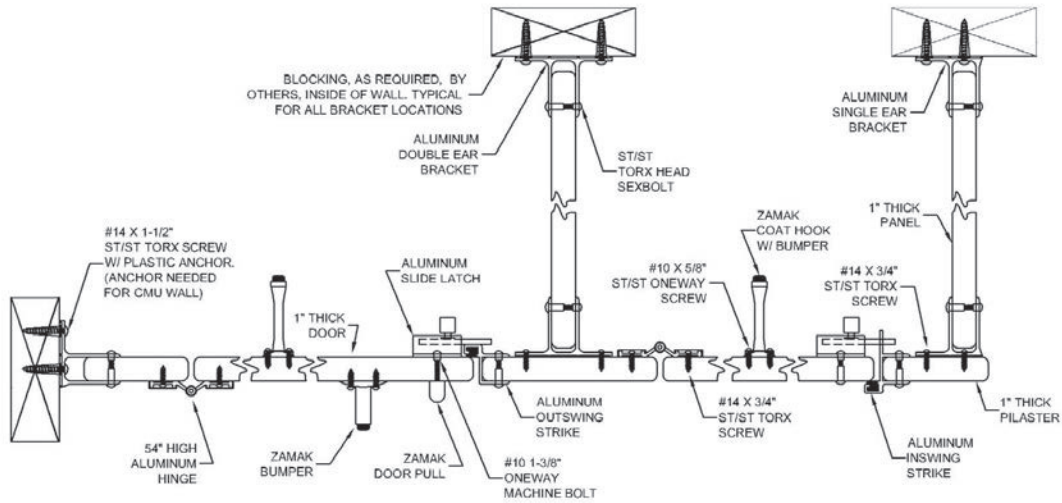
Drawings for all configuration options are available at www.scrantonproducts.com and on the memory stick attached to the binder.



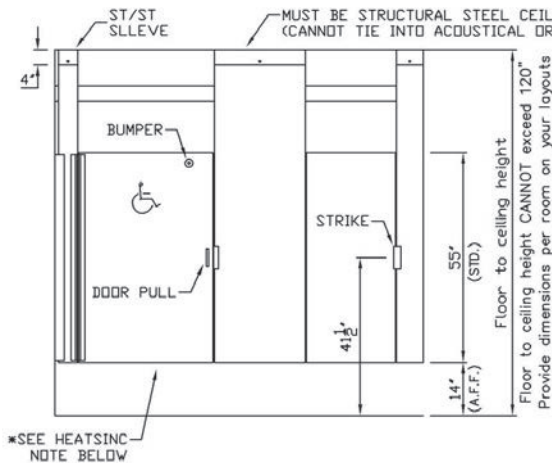
CEILING HUNG

54" Surface Mounted Aluminum Hinge Continuous Aluminum Brackets

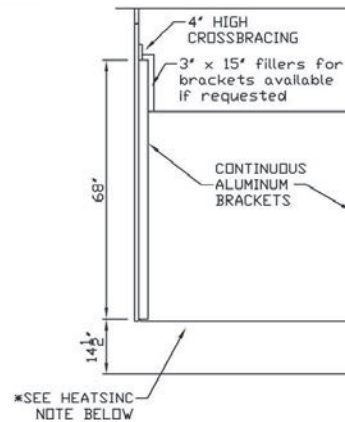
PLAN ELEVATION



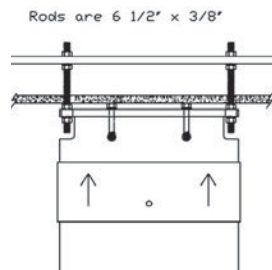
FRONT ELEVATION



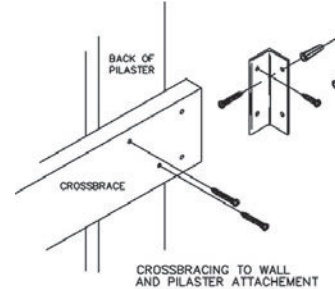
SIDE ELEVATION



CEILING MOUNT



CROSS BRACE



NOTE: Job-Specific Specifications for all orders are located on shop drawing layouts.

* HEATSINC: Heatsinc is to be placed on the bottom of the panels & doors. (If specified)

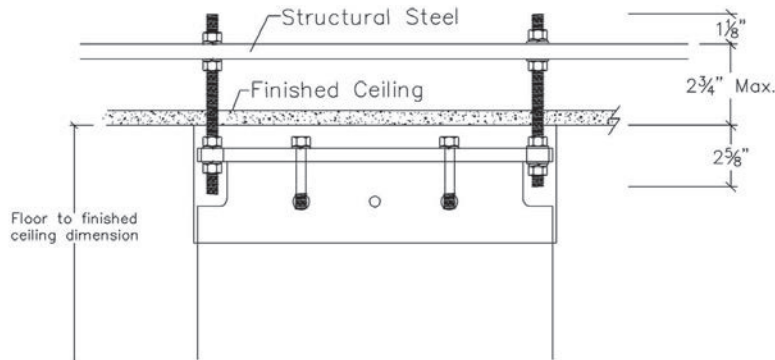
(Drawings are not to scale)

Drawings for all configuration options are available at www.scrantonproducts.com and on the memory stick attached to the binder.

CEILING HUNG

54" Surface Mounted Aluminum Hinge Continuous Aluminum Brackets

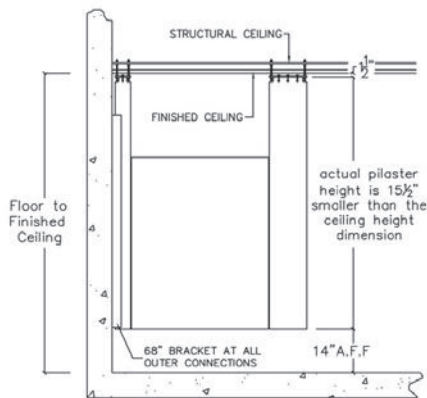
CEILING BEAM



Attention (provide the following)

Floor to finished ceiling height: _____

Please note that the height to the top of the steel can be no more than 2 3/4" higher from the finished ceiling.
(See the above detail)



Ceiling Beam can only be structural steel.

No other types are recommended.

(Note: Unistrut is not considered structural steel and should not be used.)

Only 6 1/2" threaded rods are recommended.

NOTE: Job-Specific Specifications for all orders are located on shop drawing layouts.

* HEATSINC: Heatsinc is to be placed on the bottom of the panels & doors. (If specified)

(Drawings are not to scale)

Drawings for all configuration options are available at www.scrantonproducts.com and on the memory stick attached to the binder.